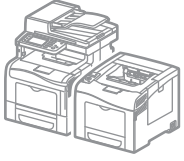


Phaser® 6600 and WorkCentre® 6605

Service Manual



Phaser® 6600 and WorkCentre® 6605 Service Manual **Updated 10/14/15 DAW**

Xerox Internal-Use Only



Parts Lists

5

In this chapter...

- Serial Number Location and Range
- Using the Parts List
- Parts Navigation: Phaser 6600
- Parts Navigation: WorkCentre 6605
- Parts Lists
- Xerox Supplies and Accessories

Serial Number Location and Range

Changes to Xerox products are made to accommodate improved components. When ordering parts include this information:

- Component's part number
- Product type or model number
- Serial Number of the printer

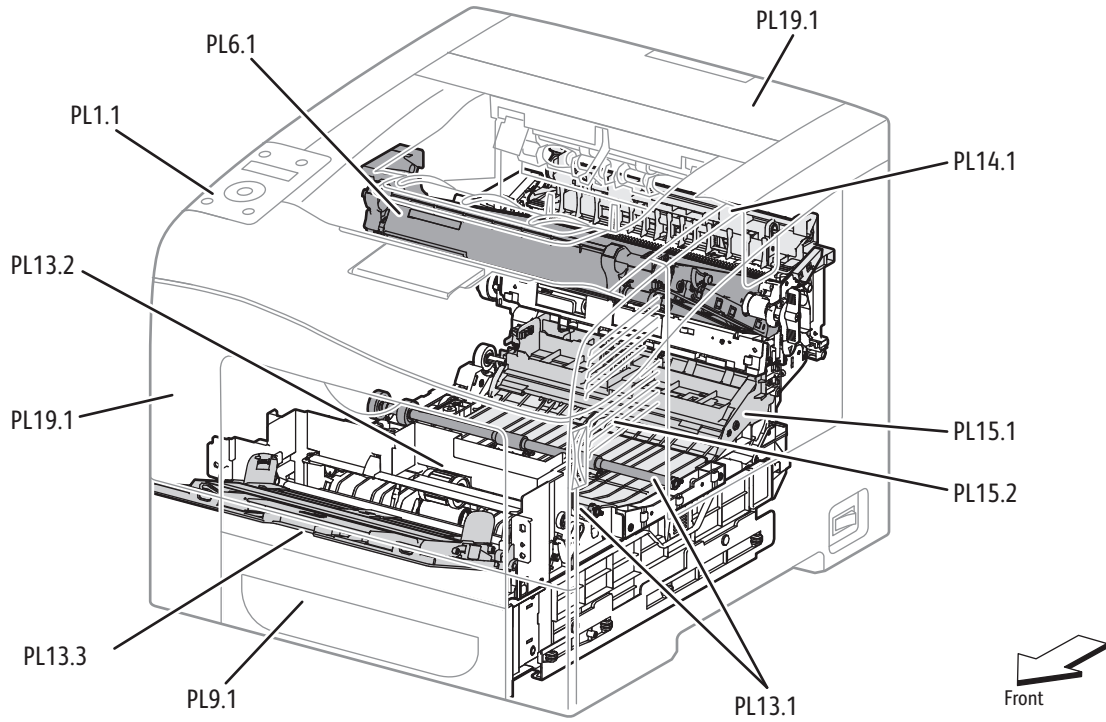
The serial number label is located on the rear of the printer as shown.



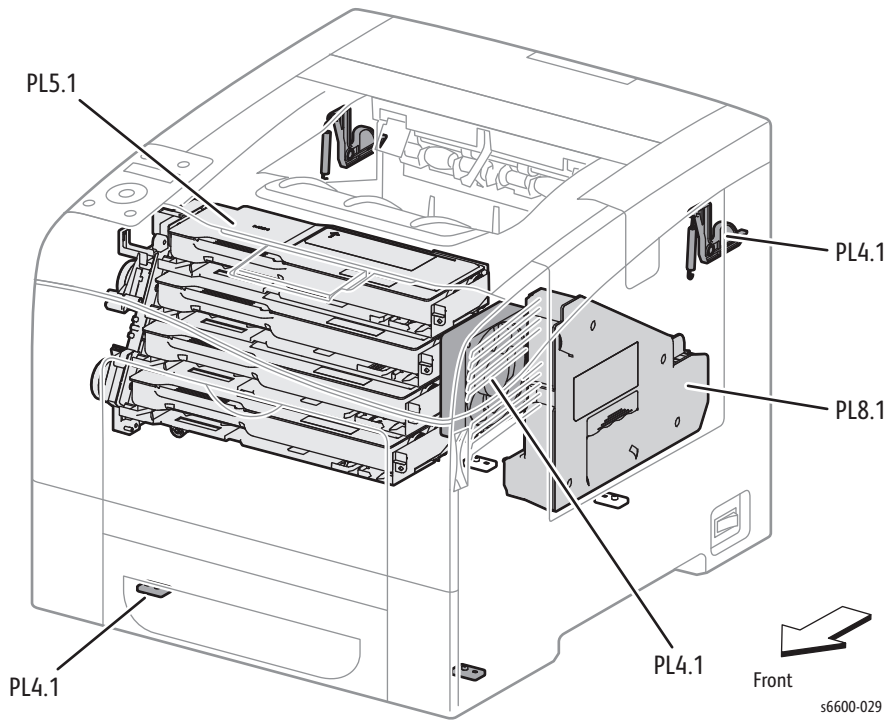
Using the Parts List

- Most of the parts lists for the MFP and SFP are common. The lists that are not common include the product name in the title. For example, Parts List 1.1 for the SFP is titled *Phaser 6600 UI (Control Panel)*; Parts List 1.1 for the MFP is titled *WorkCentre 6605 UI (Control Panel)*.
- **ID No.:** The callout number from the exploded part diagram.
- **Name/Description:** The name of the part to be ordered and the number of parts supplied per order.
- **Part Number:** The material part number used to order that specific part.
- Parts identified throughout this manual are referenced **PL#.#.#**; For example, PL3.1.10 means the part is item 10 of Parts List 3.1.
- A Black triangle preceding a number followed by a parenthetical statement in an illustrated parts list means the item is a parent assembly, made up of the individual parts called out in parentheses.
- The notation “**with X~Y**” following a part name indicates an assembly that is made up of components X through Y. For example, “1 (with 2~4)” means part 1 consists of part 2, part 3, and part 4.
- The notation “**J1<>J2 and P2**” is attached to a wire harness. It indicates that connector Jack 1 is attached to one end of the wire harness and connector J2 is attached to the other end that is plugged into P2.
- Only parts with part numbers are available for ordering. Parts without part numbers are available on the parent assembly.

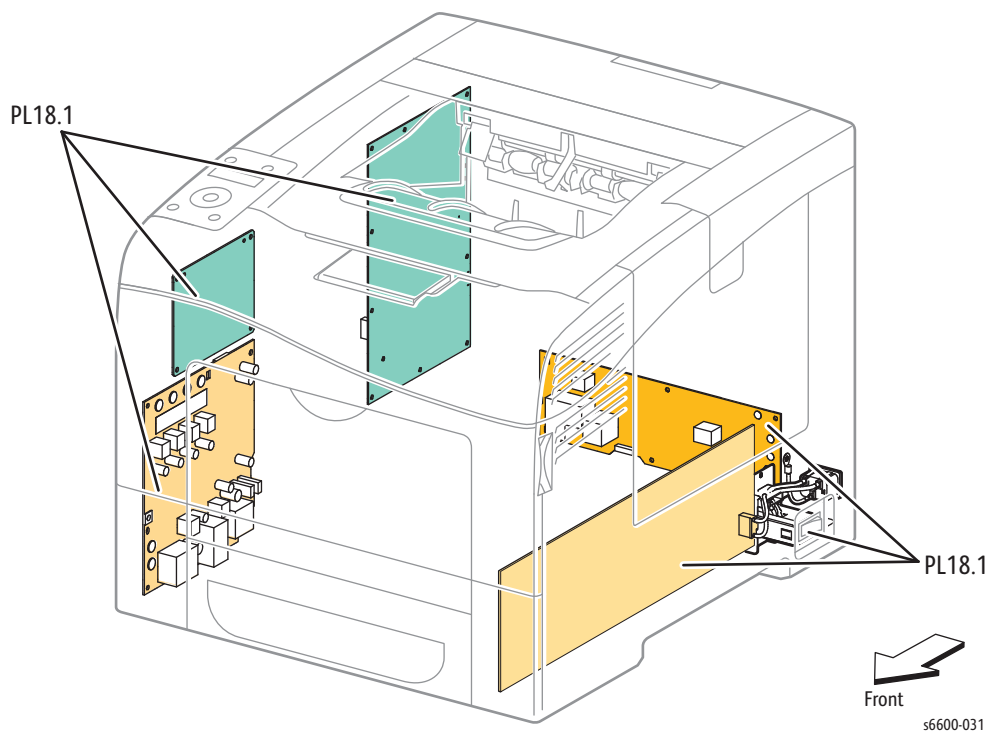
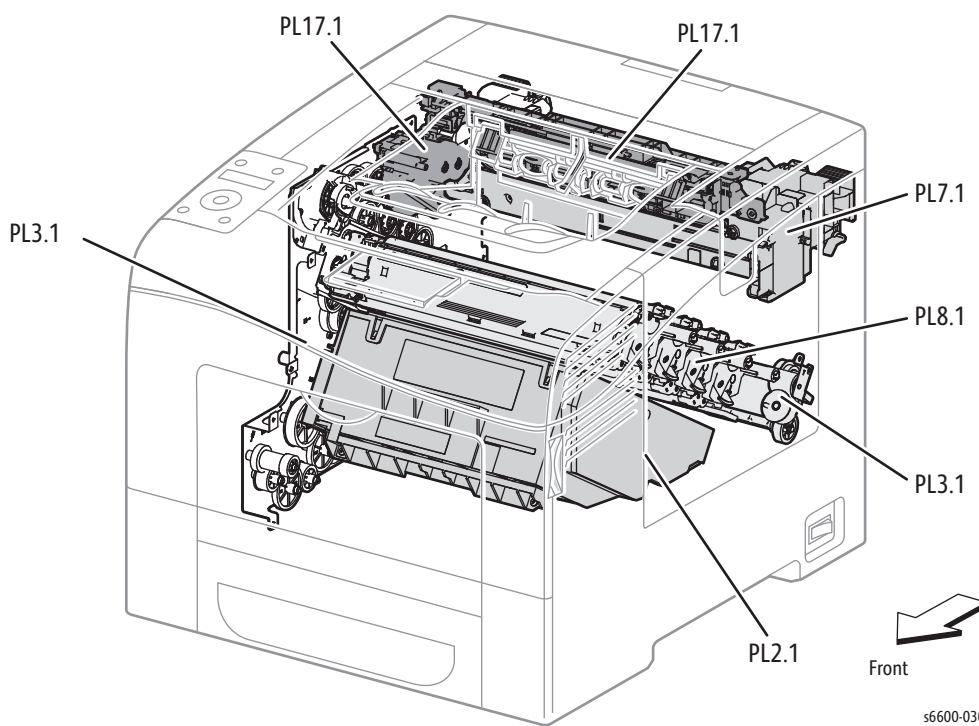
Parts Navigation: Phaser 6600



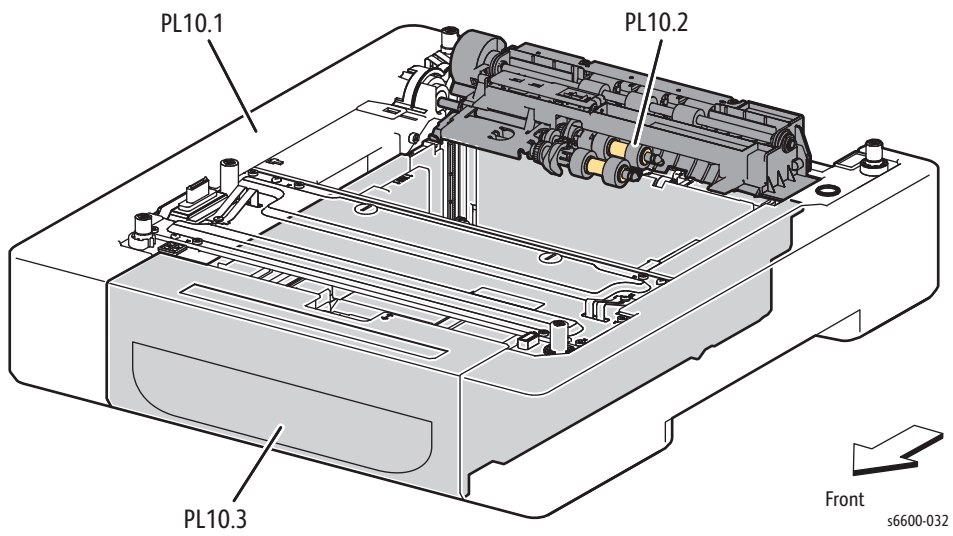
s6600-028



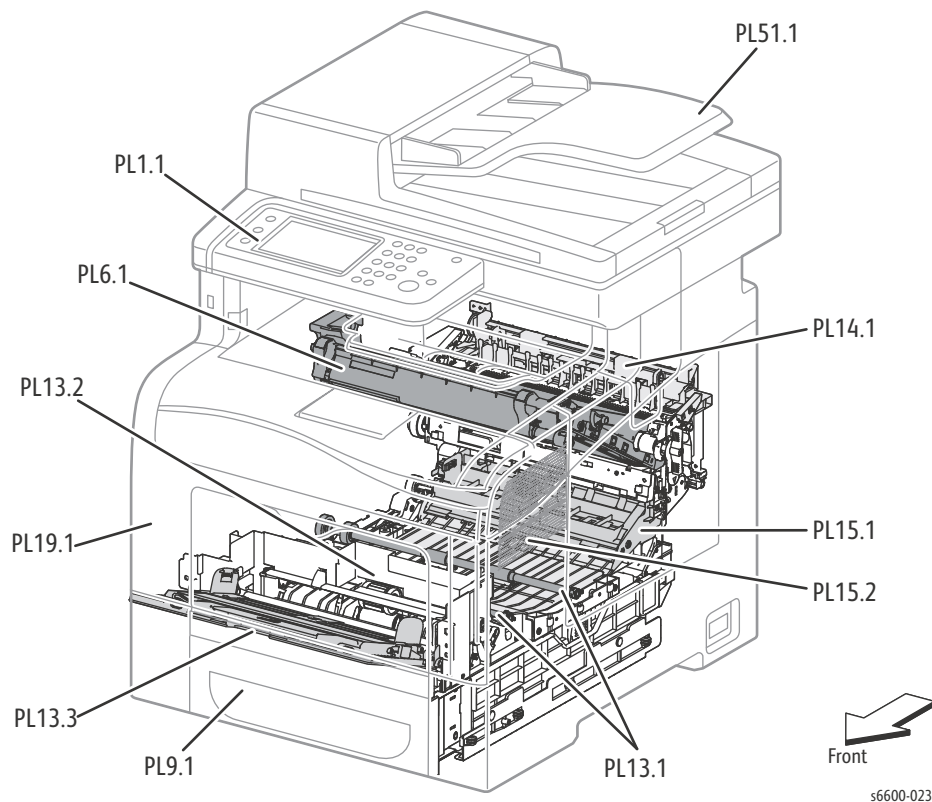
s6600-029



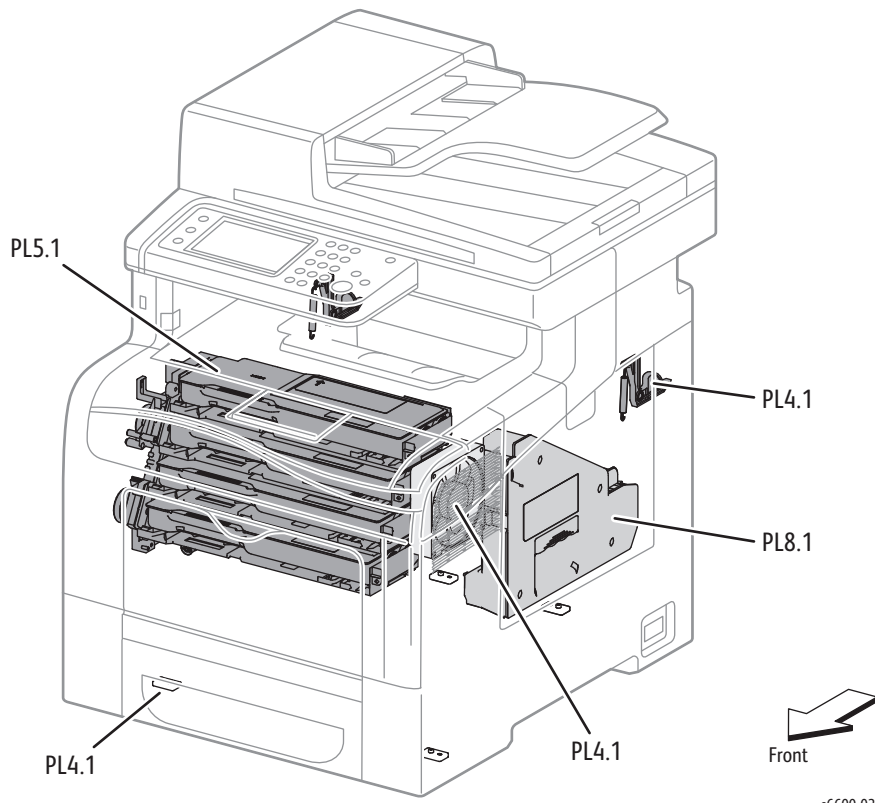
Parts Lists



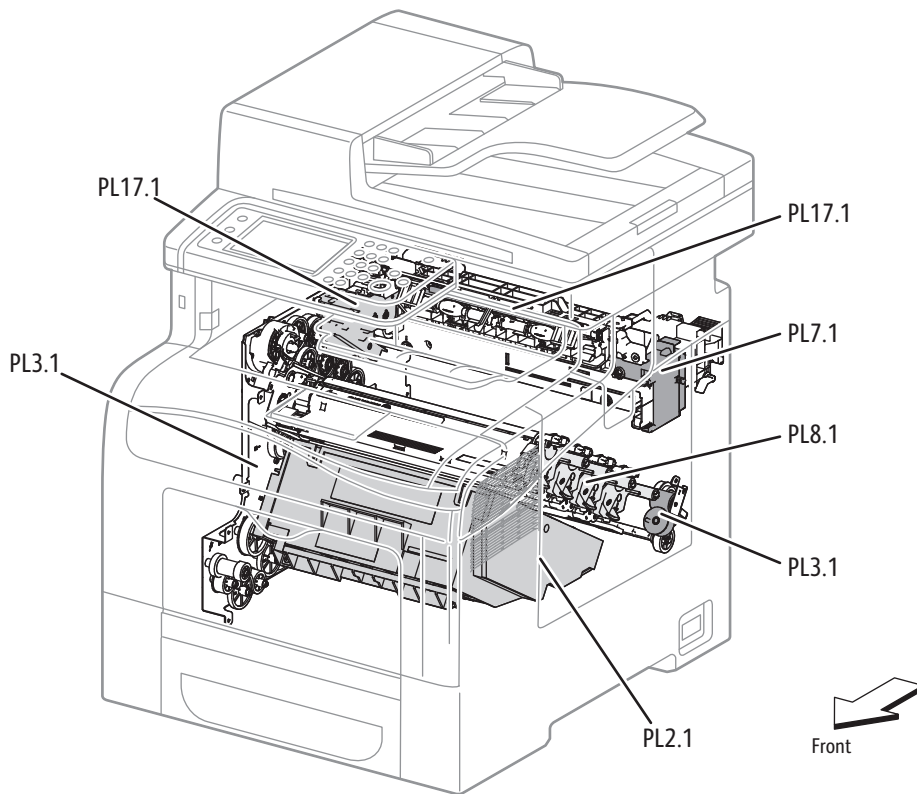
Parts Navigation: WorkCentre 6605



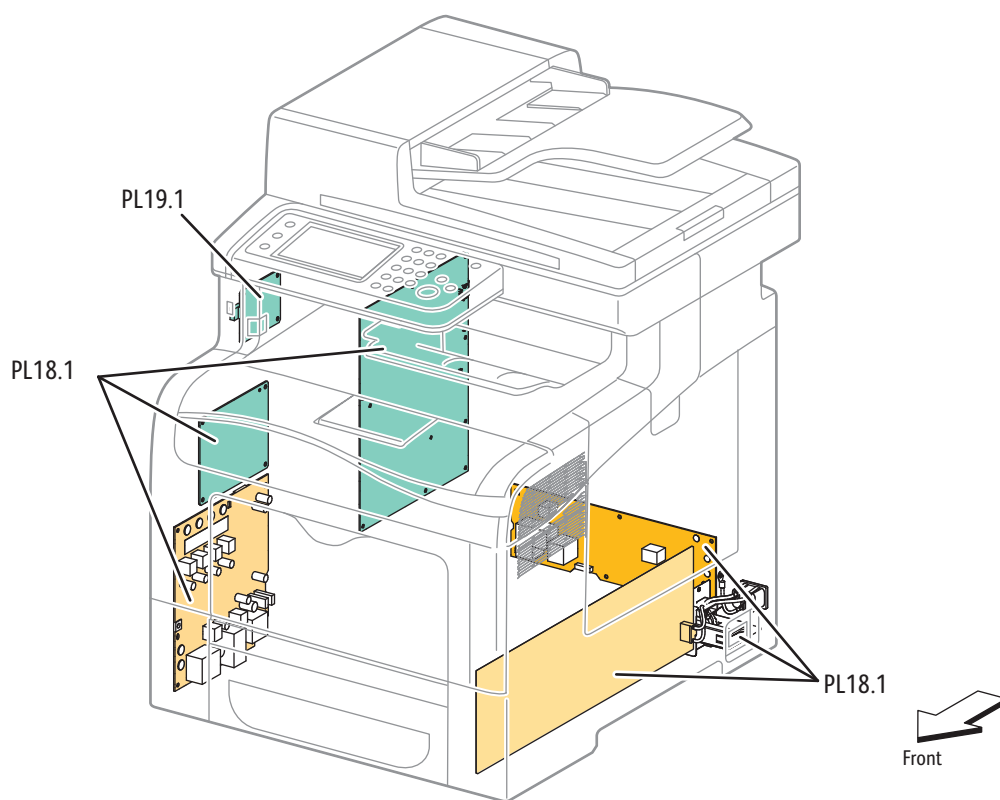
Parts Lists



s6600-024



s6600-025



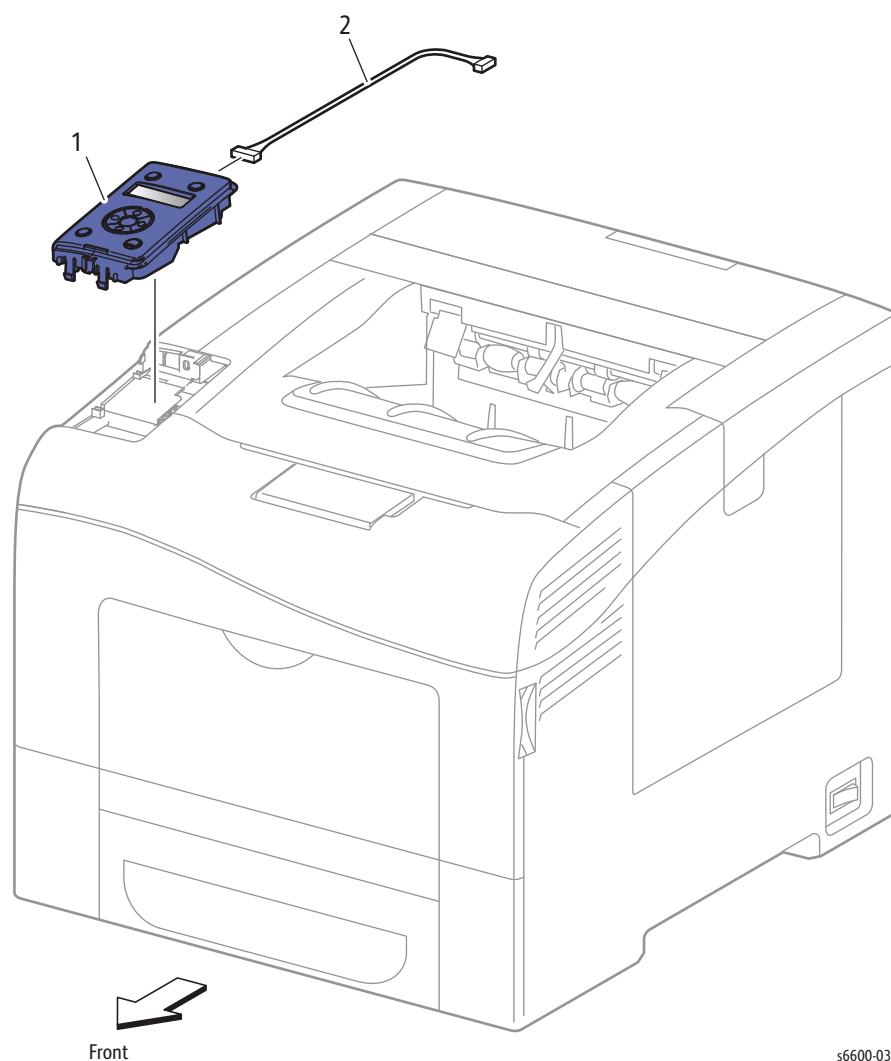
s6600-026

Parts Lists

The following list names each parts list and gives its page number:

Parts List 1.1 Phaser 6600 UI (Control Panel)	5-11
Parts List 1.1 WorkCentre 6605 UI (Control Panel)	5-12
Parts List 2.1 Laser Unit	5-13
Parts List 3.1 Drive	5-14
Parts List 4.1 NOHAD	5-15
Parts List 5.1 Dispenser	5-17
Parts List 6.1 Transfer	5-19
Parts List 7.1 Fuser	5-21
Parts List 8.1 Xerographic	5-22
Parts List 9.1 Tray	5-24
Parts List 10.1 Option Feeder	5-27
Parts List 10.2 Option Feeder	5-29
Parts List 10.3 Option Feeder	5-30
Parts List 13.1 Bypass Tray (MSI)	5-32
Parts List 13.2 Bypass Tray (MSI)	5-34
Parts List 13.3 Bypass Tray (MSI)	5-36
Parts List 14.1 Duplex	5-38
Parts List 15.1 Registration / Feeder	5-39
Parts List 15.2 Registration / Feeder	5-41
Parts List 17.1 Exit	5-43
Parts List 18.1 Phaser 6600 Electrical (1/2)	5-45
Parts List 18.1 WorkCentre 6605 Electrical (2/2)	5-48
Parts List 18.2 Electrical (2/2)	5-51
Parts List 19.1 Phaser 6600 Covers	5-53
Parts List 19.1 WorkCentre 6605 Covers	5-56
Parts List 51.1 WorkCentre 6605 Scanner	5-60

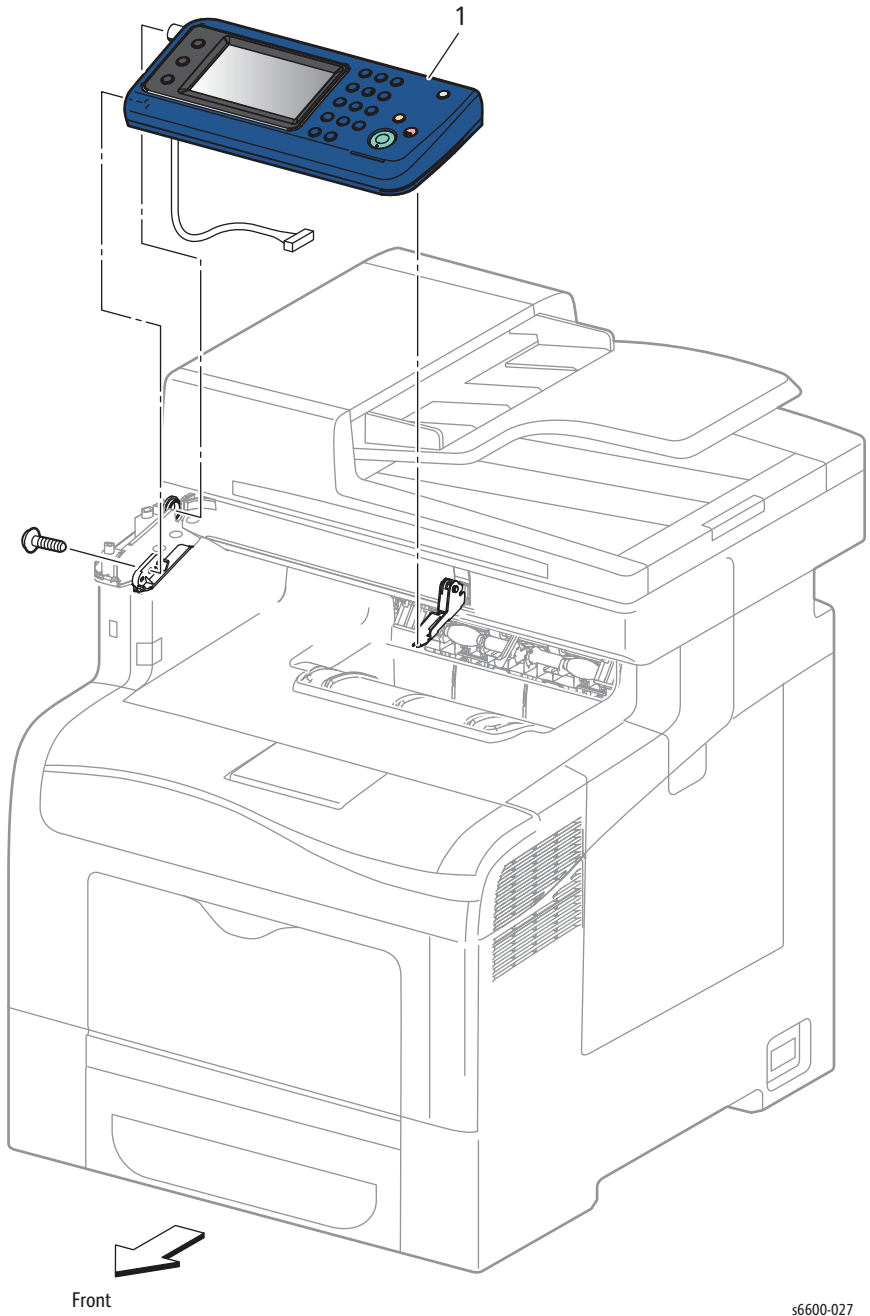
Parts List 1.1 Phaser 6600 UI (Control Panel)



Parts List 1.1 Phaser 6600 UI (Control Panel)

Item	Name	Part Number
1	Panel Assy UI 110V (Control Panel)	848K58080
2	Harness Assy UI (Control Panel Harness)	952K03260

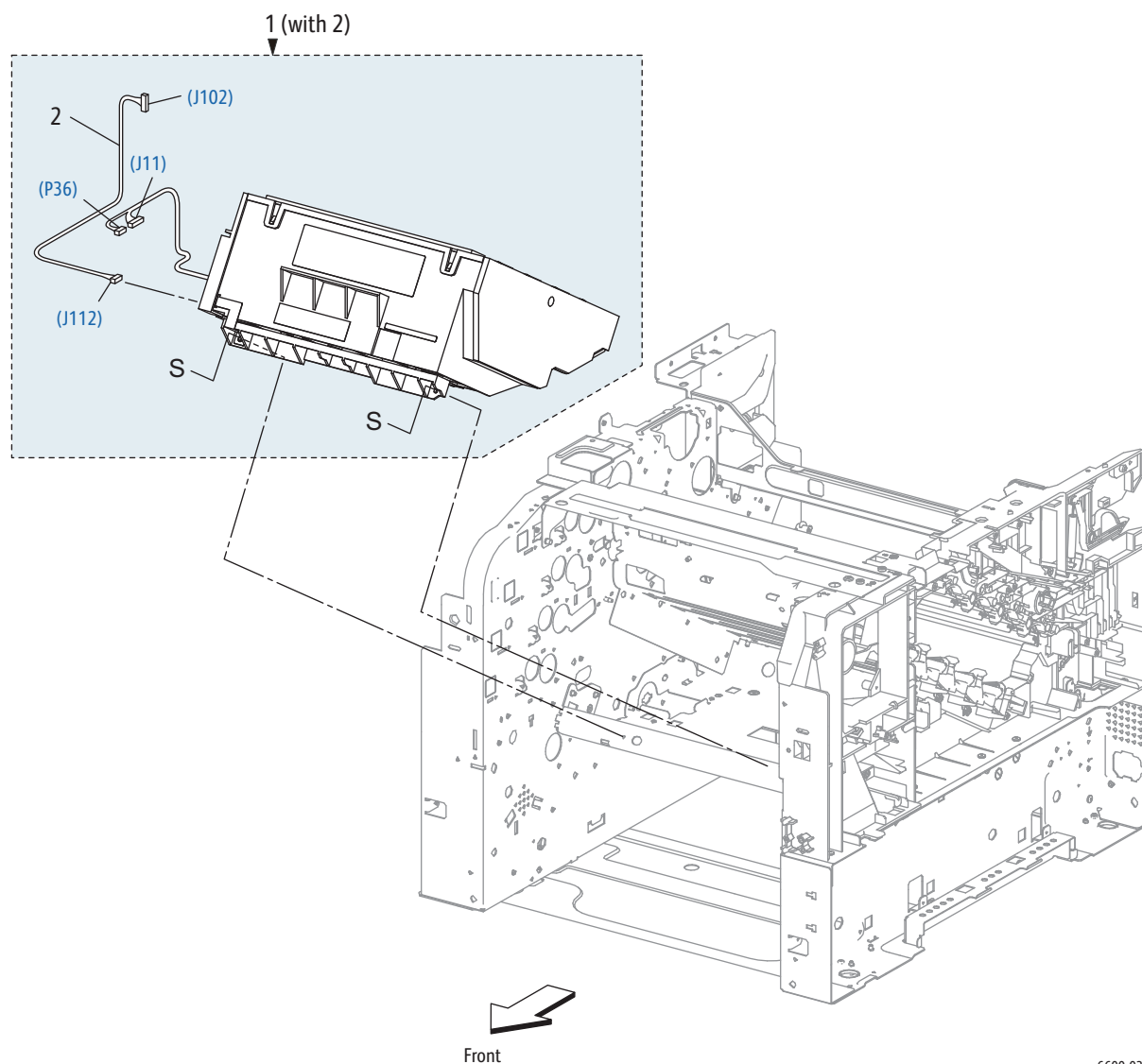
Parts List 1.1 WorkCentre 6605 UI (Control Panel)



PL 1.1 WorkCentre 6605 UI (Control Panel)

Item	Name	Part Number
1A	Console Assy UI AIO (Control Panel Assembly) 110 V	See attached bulletin
1B	Console Assy UI AIO (Control Panel Assembly) 220 V	

Parts List 2.1 Laser Unit

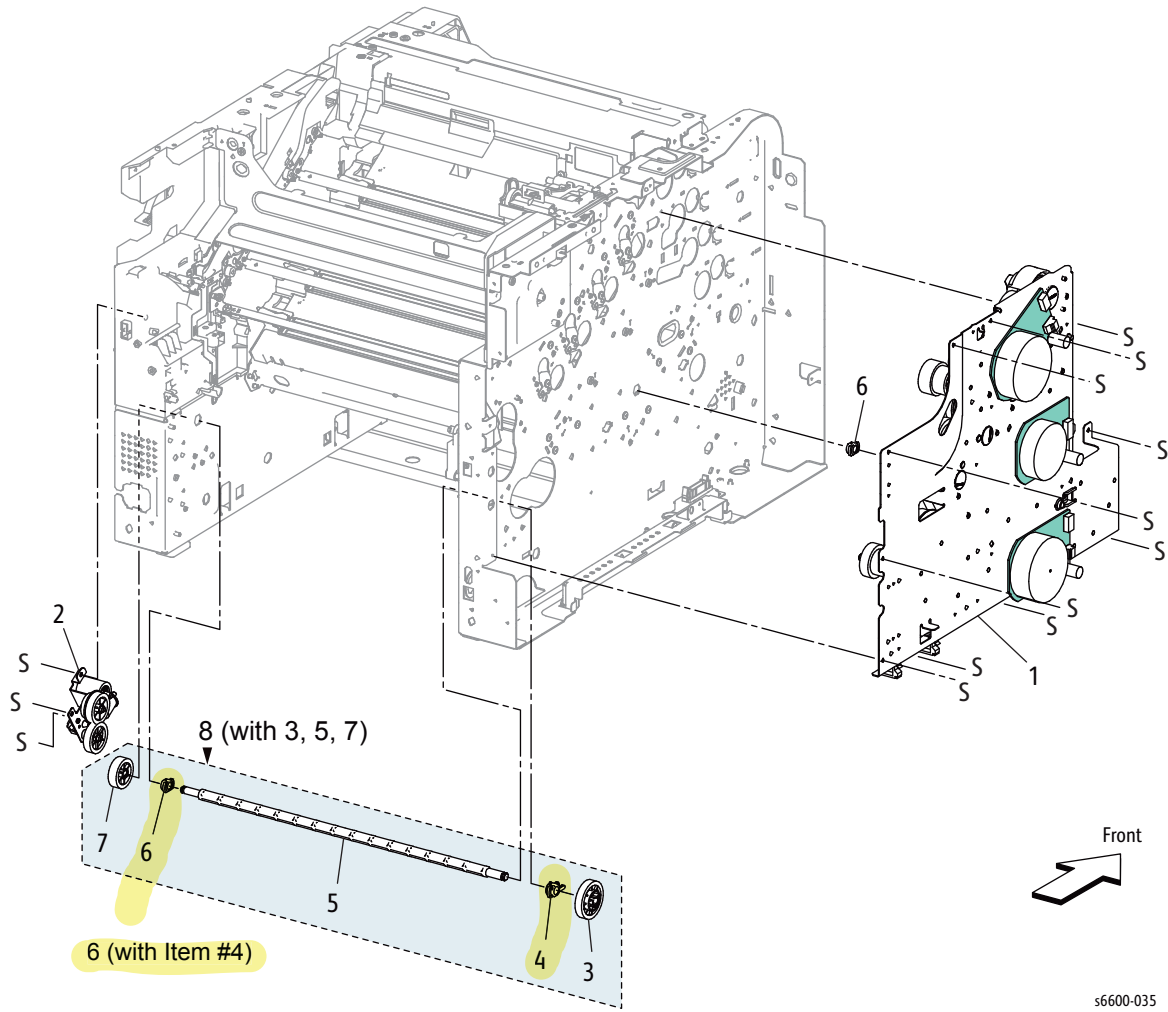


s6600-034

Parts List 2.1 Laser Unit

Item	Name	Part Number
1	ROS Assy (with 2) (Laser Unit)	062K24630
2	Harness Assy ROS Video (Laser Unit Video Harness Assembly)	—

Parts List 3.1 Drive

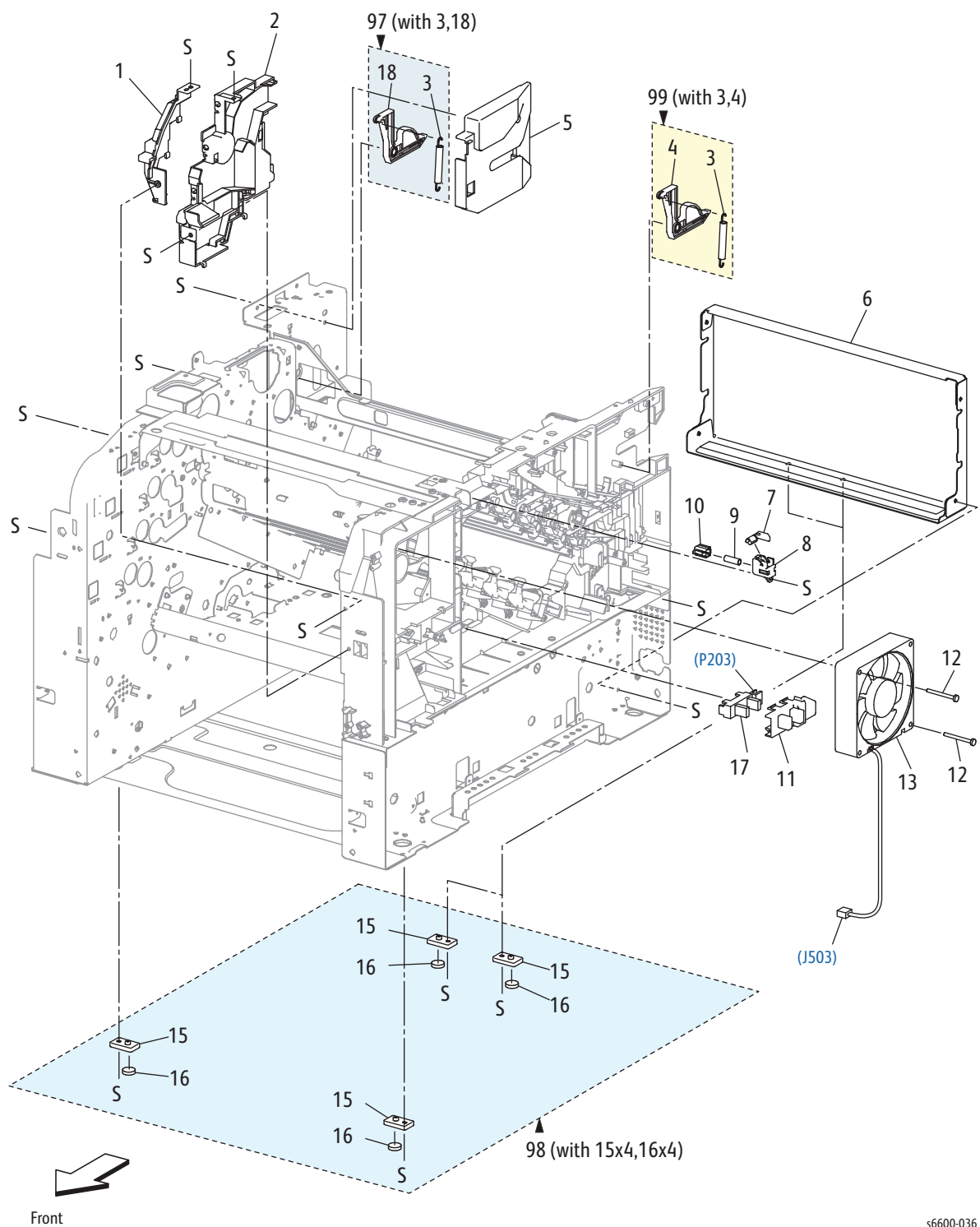


s6600-035

Parts List 3.1 Drive

Item	Name	Part Number
1	Drive Assy Seg3 (Drive Assembly)	007K17954
2	Drive Assy Waste (Waste Drive Assembly)	007K17960
3	Gear Waste 2 (Waste Gear 2)	—
4	Bearing Waste 1(Waste Bearing 1; part of item 6)	—
5	Shaft Idler Waste (Waste Idler Shaft)	—
6	Bearing Waste 2 (Waste Bearing 2, includes item 4)	604K90781
7	Gear Waste 3 (Waste Gear 3)	—
8	Drive Shaft Assembly Kit (with 3, 5, 7)	007K17971

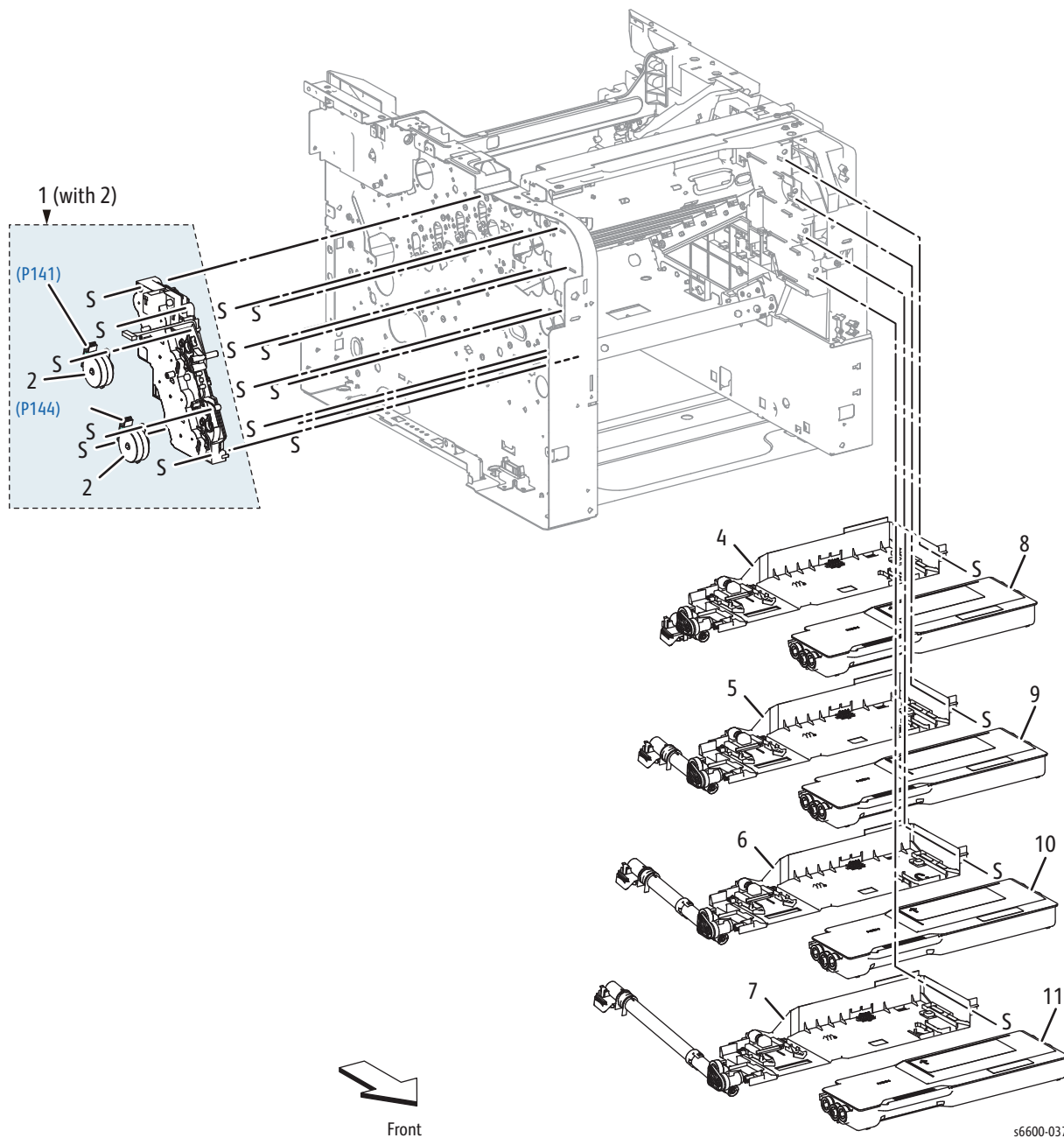
Parts List 4.1 NOHAD



Parts List 4.1 NOHAD

Item	Name	Part Number
1	Duct_frame_seg3 (Frame Duct)	—
2	Duct_base_seg3 (Base Duct)	—
3	Spring Latch (Latch Spring)	—
4	Latch Rear R (Right Rear Latch)	—
5	Bracket Latch L (Left Latch Bracket)	—
6	Frame Rear S3	—
7	Actuator-Belt IL RT	—
8	Holder-Belt IL	—
9	Spring-Belt IL	—
10	Actuator-Belt IL LN	—
11	Cover-Sensor Waste (Waste Sensor Cover)	—
12	Screw Fan	—
13	Fan Main (Main Fan)	127E86480
14	—	—
15	Foot Base Front (Front Base Foot)	—
16	Foot	—
17	Sensor Toner Full (Toner Full Sensor)	930W00511
18	Latch Rear L (Left Rear Latch)	—
97	Kit Latch L (with3,18) (Left Latch Kit)	604K73980
98	Kit Foot Assy (with15x4,16x4) (Foot Assembly Kit)	604K76341
99	Kit Latch R (with3,4) (Right Latch Kit)	604K76350

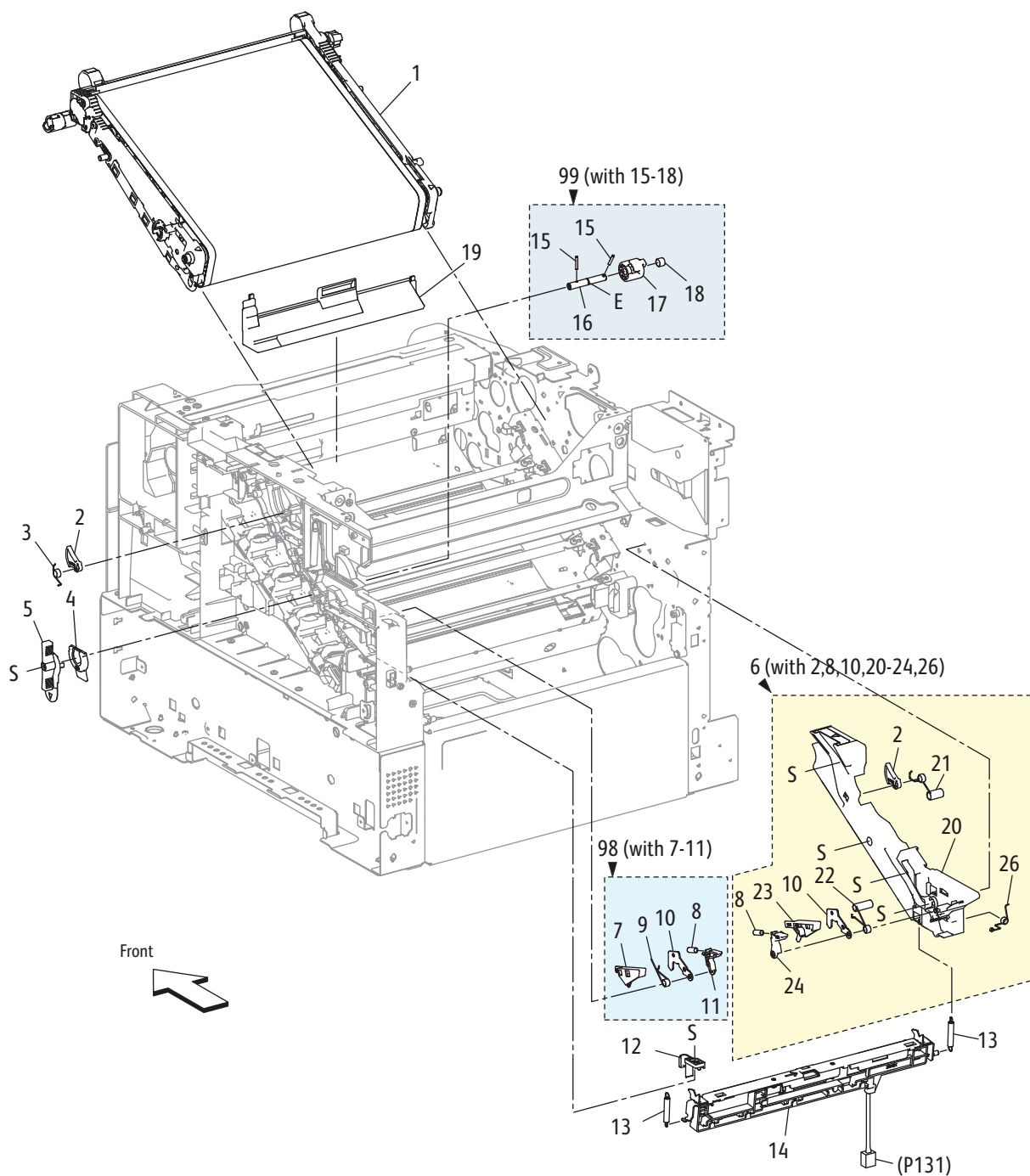
Parts List 5.1 Dispenser



Parts List 5.1 Dispenser

Item	Name	Part Number
1	Motor High Assy Disp (Upper Dispenser Motor Assembly) (with 2)	127K64252
2	Motor Assy Disp (Dispenser Motor)	127K64260
3	—	—
4	Disp Assy- Y (Dispenser Assembly - Y)	094K93432
5	Disp Assy- M (Dispenser Assembly - M)	094K93422
6	Disp Assy- C (Dispenser Assembly - C)	094K93412
7	Disp Assy- K (Dispenser Assembly - K)	094K93402
8	Toner Cartridge Y	—
9	Toner Cartridge M	—
10	Toner Cartridge C	—
11	Toner Cartridge K	—

Parts List 6.1 Transfer

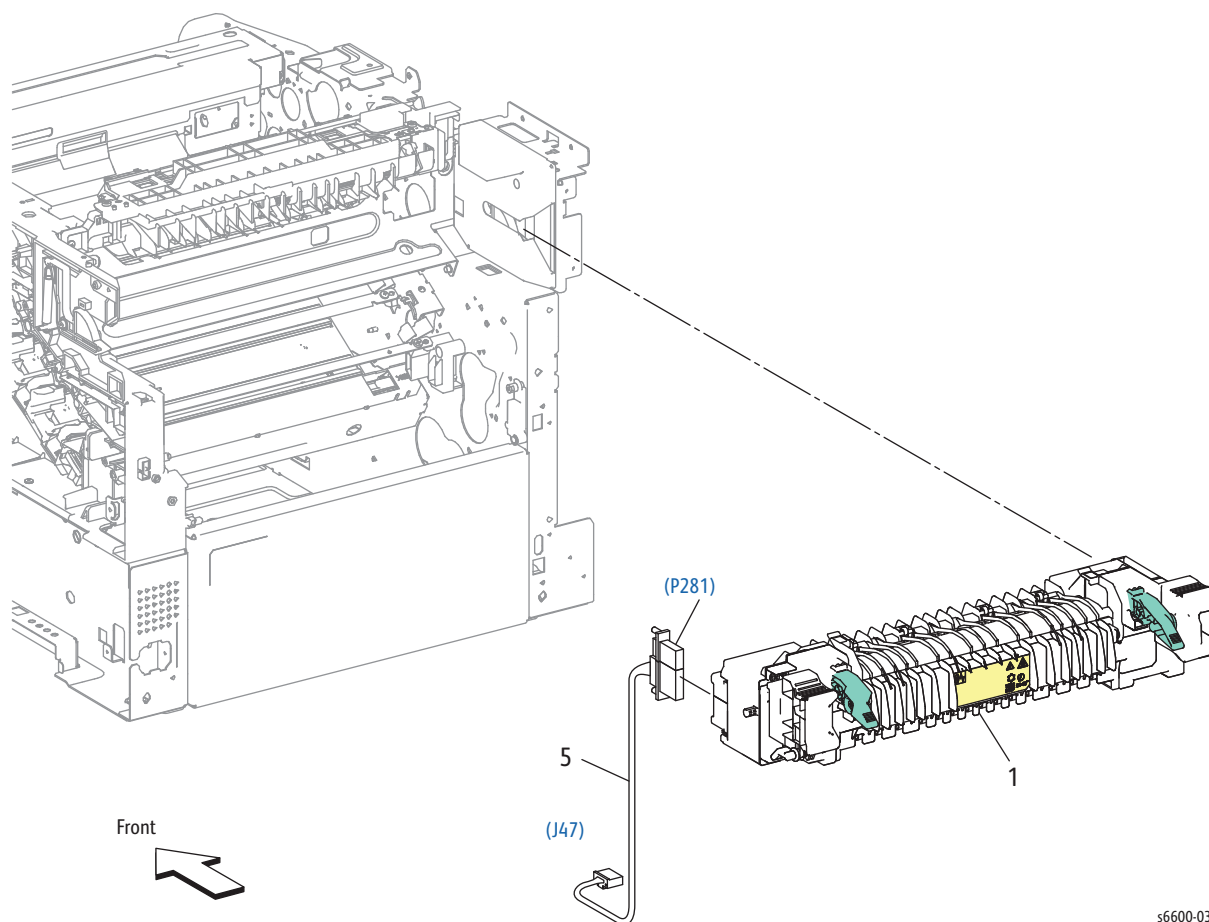


s6600-038

Parts List 6.1 Transfer

Item	Name	Part Number
1	Belt Assy-IBT, Unit (Transfer Belt Assembly)	See Item #97
2	Latch-IBT Front (Front Transfer Belt Latch)	—
3	Spring-IBT Front R (Right Front Transfer Belt Spring)	—
4	Actuator-Coupling (Coupling Actuator)	—
5	Handle-IBT (Waste Cartridge Lock)	803E15100
6	Guide Assy-IBT L (with 2, 8, 10, 20-24, 26) (Left Transfer Belt Guide Assembly)	032K07420
7	Housing-Latch IBT R (Transfer Belt Right Latch Housing)	—
8	Spring-Latch IBT (Transfer Belt Latch Spring)	—
9	Spring-IBT Rear R (Transfer Belt Right Rear Spring)	—
10	Plate-Latch IBT (Transfer Belt Latch Plate)	—
11	Arm-Latch IBT R (Transfer Belt Right Latch Arm)	—
12	Guide-CTD R (Right CTD Guide)	—
13	Spring-CTD (CTD Spring)	809E96300
14	Sensor Assy CTD (CTD Sensor Assembly)	130K77830
15	Pin-Dowel (Dowel Pin)	—
16	Shaft-Coupling (Coupling Shaft)	—
17	Coupling-Retract IBT (Transfer Belt Retract Coupling)	—
18	Spring-Coupling (Coupling Spring)	—
19	Cover-Harness IBT(Transfer Belt Harness Cover)	—
20	Guide-Belt L (Left Belt Guide)	—
21	Spring-IBT Front L (Left Front Transfer Belt Spring)	—
22	Spring-IBT Rear L (Left Rear Transfer Belt Spring)	—
23	Housing-Latch IBT L (Left Transfer Belt Latch Housing)	—
24	Arm-Latch IBT L (Left Transfer Belt Latch Arm)	—
25	—	—
26	Spring-Gnd ADC	—
97	Kit Belt Assy-IBT, Unit (with1) (Transfer Belt Assembly Kit)	604K77530
98	Kit Latch R (with7-11) (Transfer Belt Right Latch Kit)	604K76280
99	Kit Coupling (with15-18) (Coupling Kit)	604K76290

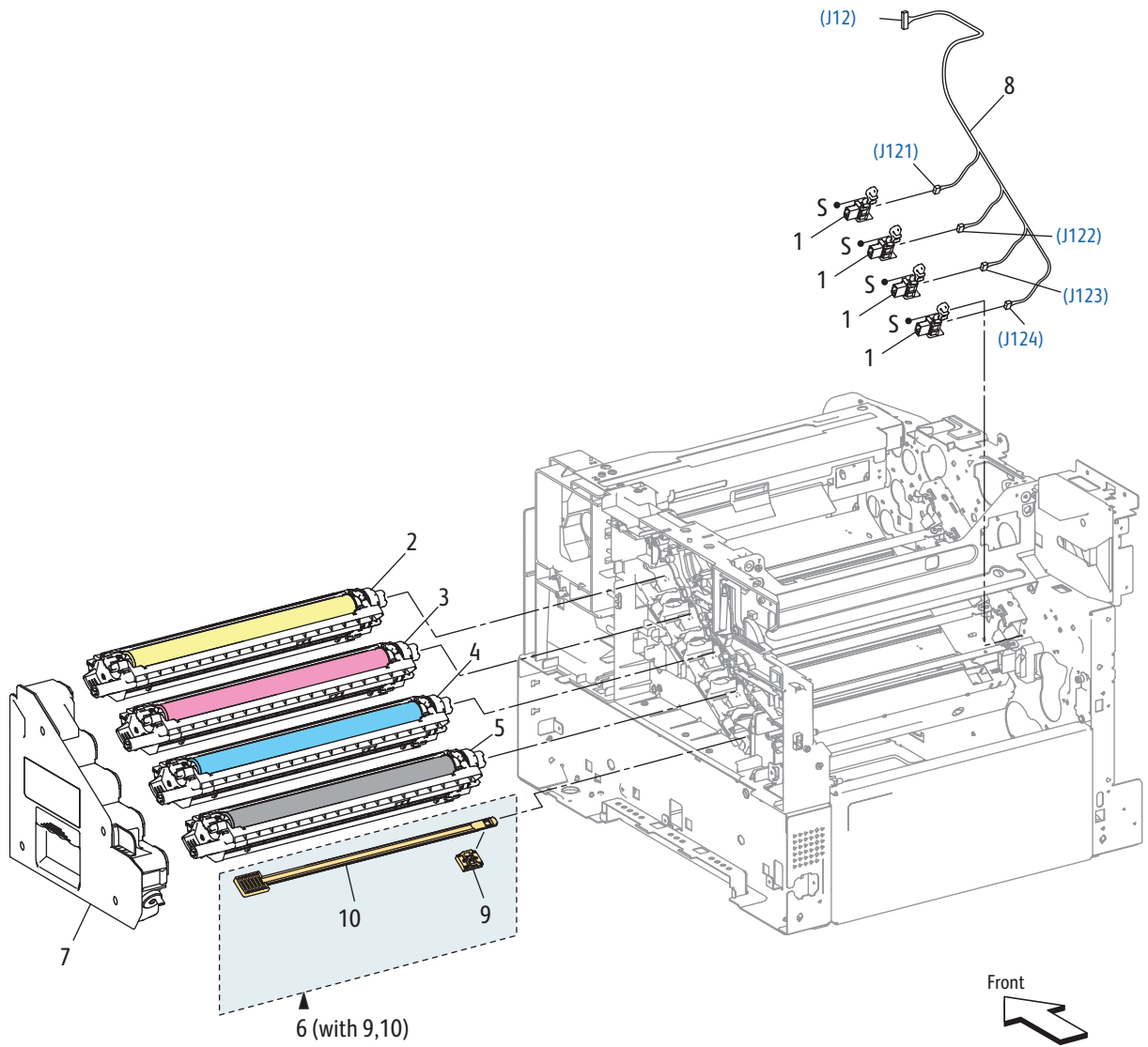
Parts List 7.1 Fuser



Parts List 7.1 Fuser

Item	Name	Part Number
1A	Fusing Assy 110V (Fuser Assembly)	115R00076
1B	Fusing Assy 220V (Fuser Assembly)	115R00077
2	—	—
3	—	—
4	—	—
5A	Harness Assy Htr 100V (Heater Harness Assembly)	—
5B	Harness Assy Htr 200V (Heater Harness Assembly)	—

Parts List 8.1 Xerographic

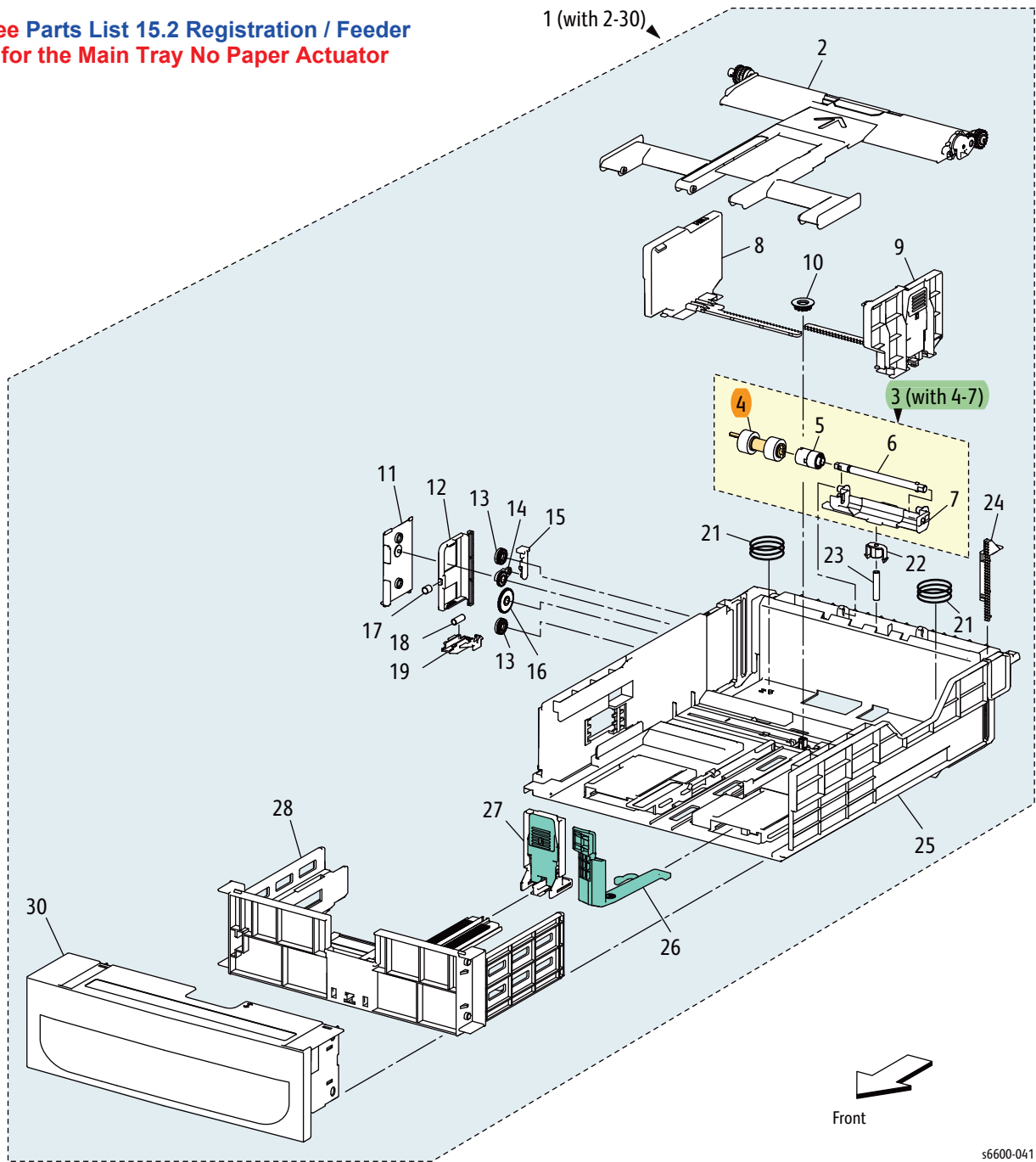


Part List 8.1 Xerographic

Item	Name	Part Number
1	CRUM Connector Assembly	019K12700
2	Xero Deve CRU Assy (Imaging Unit)-Y	—
3	Xero Deve CRU Assy (Imaging Unit)-M	—
4	Xero Deve CRU Assy (Imaging Unit)-C	—
5	Xero Deve CRU Assy (Imaging Unit)-K	—
6	Cleaner Assembly (with9,10)	—
7	Box Assy-Waste (Waste Cartridge)	—
8	Connector Assy-Crum Trans (Transfer CRUM Connector Assembly)	—
9	Cleaner Assembly Base	—
10	Rod Cleaner	—
95	Kit Xero Deve CRU Assy (Imaging Unit)-Y (with2)	604K77581
96	Kit Xero Deve CRU Assy (Imaging Unit)-M (with3)	604K77571
97	Kit Xero Deve CRU Assy (Imaging Unit)-C (with4)	604K77561
98	Kit Xero Deve CRU Assy (Imaging Unit)-K (with5)	604K77551

Parts List 9.1 Option Tray

**See Parts List 15.2 Registration / Feeder
for the Main Tray No Paper Actuator**



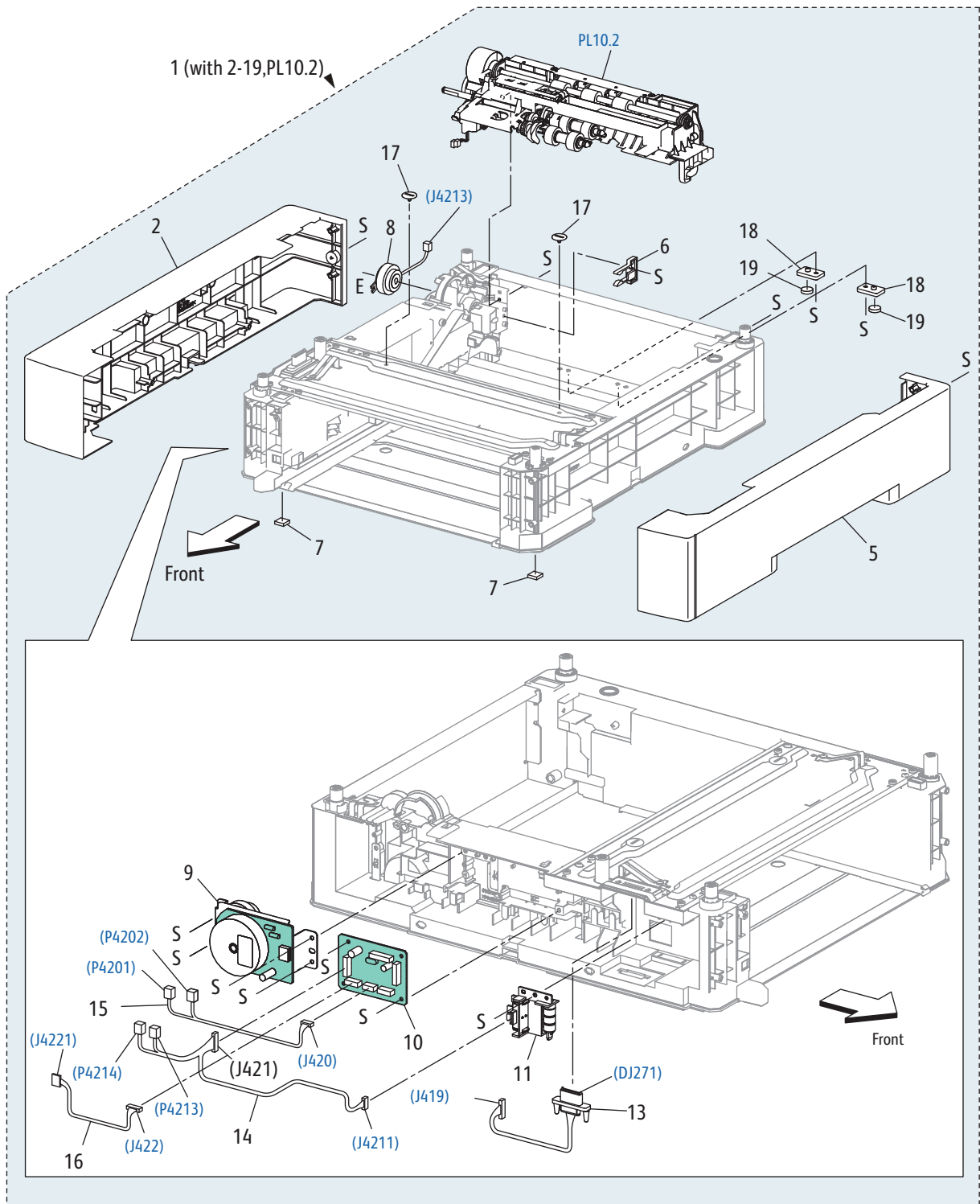
s6600-041

Parts List 9.1 Main Tray

Item	Name	Part Number
1	Cassette Assy 550 IOT (with 2-30) (550-sheet Main Tray)	050K66496
2	Plate Assy Bottom (Bottom Plate Assembly)	—
3	Holder Assy Retard CST (with 4-7) (Tray Retard Holder Assembly)	604K77660
4	Roll Assy Feed (Feed Roller Kit, with 2 Feed Rolls)	675K47673
5	Clutch Friction RTD Z	—
6	Shaft Retard CST (Tray Retard Shaft)	—
7	Holder Retard CST	—
8	Guide Assy Side L 550 (Left Side Guide Assembly)	—
9	Guide Assy Side R 550 (Right Side Guide Assembly)	—
10	Gear Pinion	—
11	Cover BTM Lock 550	—
12	Rack BTM Lock 550	—
13	Gear BTM Lock Pinion	—
14	Gear Lever BTM Lock	—
15	Lever BTM Lock	—
16	Gear 40 BTM Lock	—
17	Spring BTM Lock	—
18	Spring Lock PB	—
19	Actuator Lock PB L	—
20	—	—
21	Spring BTM UP 550 A4	—
22	Holder Spring Retard MSI (Bypass Tray Retard Spring Holder)	—
23	Spring Retard CST	—
24	Rack Lift UP PB 550	—
25	Housing Base 550	—
26	Lever Ext End 550	—
27	Guide Assy End 550 Opt (550 Option End Guide Assembly)	—
28	Housing End 550	—
29	—	—
30	Handle CST 550	—

This page intentionally left blank

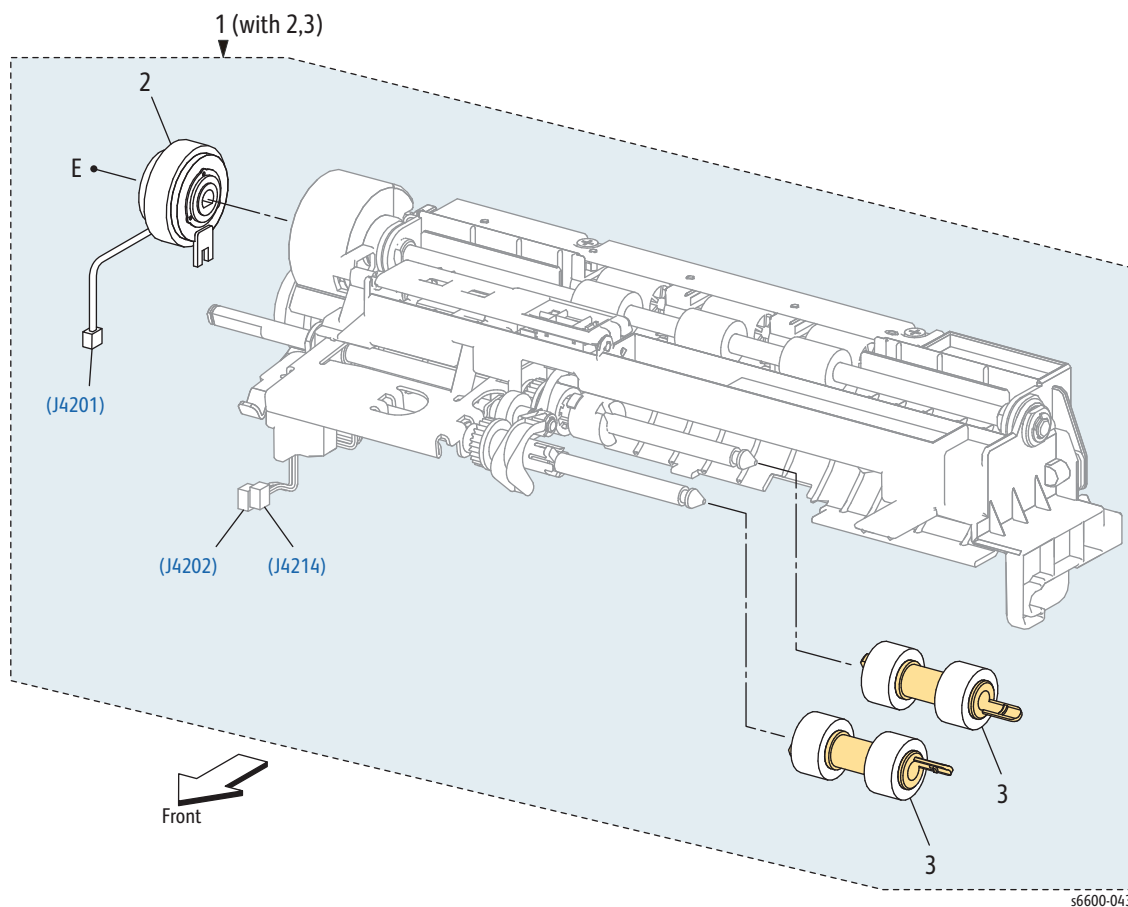
Parts List 10.1 Option Feeder



Parts List 10.1 Option Feeder

Item	Name	Part Number
1	Feeder Assy Opt 550 (with 2-19, PL10.2) (Optional 550-Sheet Feeder)	604K77500
2	Cover Side L 550 Opt (550 Option Left-Side Cover)	—
3	—	—
4	—	—
5	Cover Side R 550 Opt (550 Option Right Side Cover)	—
6	Stopper CST (Cassette Stopper)	803E10840
7	Foot Assembly	—
8	Clutch Assy Opt Feed (550 Option Feed Clutch Assembly)	005K83210
9	Drive Assy Opt 550 (550 Option Drive Assembly)	007K18020
10	PWBA Feed-H (550 Option Feeder Board)	960K62140
11	Switch Assy Size 550 (550 Size Switch Assembly)	110K16610
12	—	—
13	Harness Assy Fdr Drawer1 (Drawer 1 Feeder Harness Assembly)	—
14	Harness Assy C2 Size (C2 Size Harness Assembly)	—
15	Harness Assy C2 Turn (C2 Turn Harness Assembly)	—
16	Harness Assy Fdr Mot (Feeder Motor Harness Assembly)	—
17	Screw Joint (Joint Screw)	—
18	Foot Base Front	—
19	Foot	—

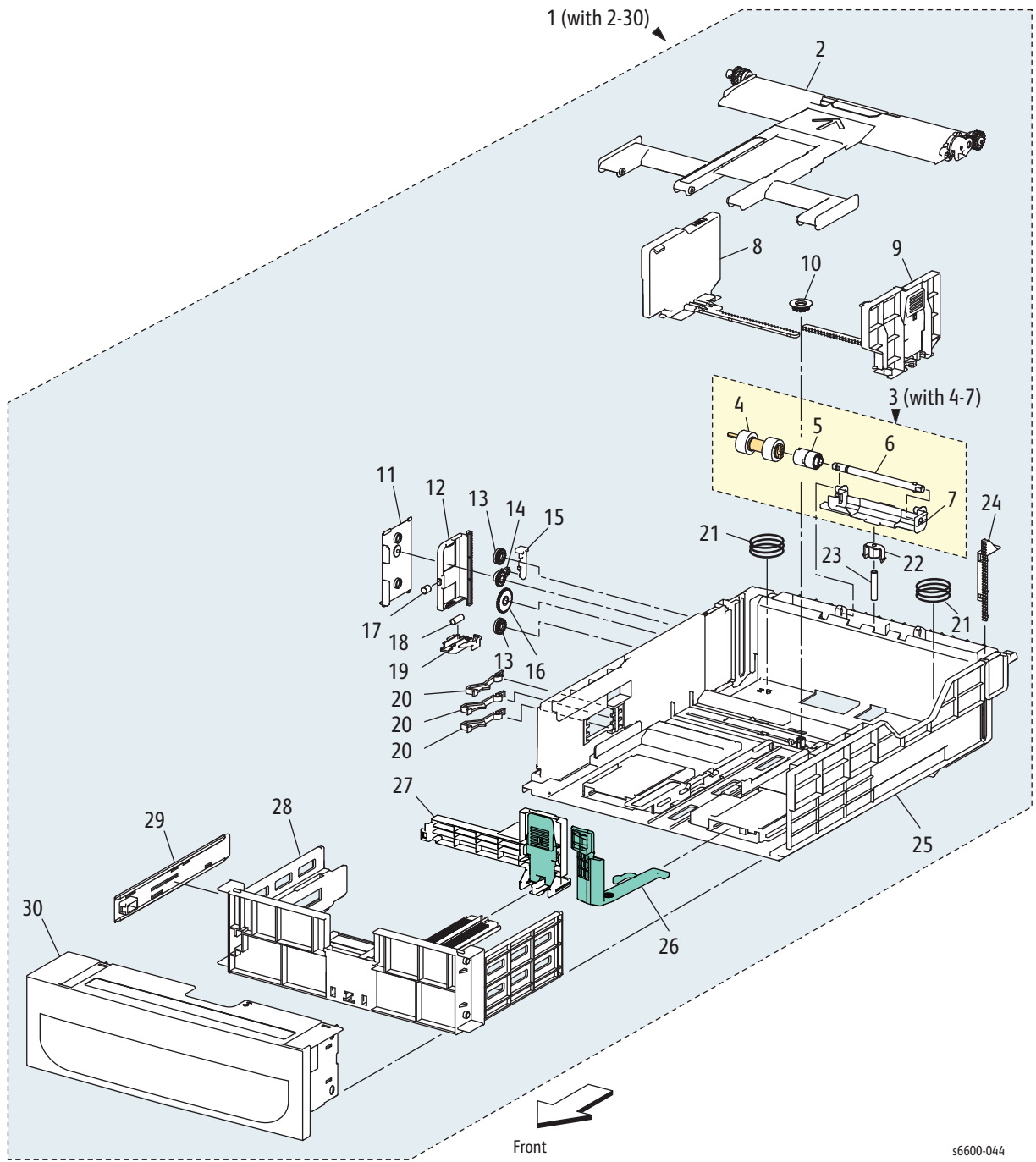
Parts List 10.2 Option Feeder



Parts List 10.2 Option Feeder

Item	Name	Part Number
1	Feed Assy Opt 550 Main (with2,3) (550 Option Main Feed Assembly)	059K71760
2	Clutch Assy Regi (550 Option Regi Clutch Assembly)	—
3	Roll Assy Feed (Feed Roller Kit, with 2 Feed Rolls)	675K47673
4	Gear Opt Feeder (550 Option Feeder Gear)	—
5	Bracket Spring Nudger	—
6	Feed Sub Assy	—

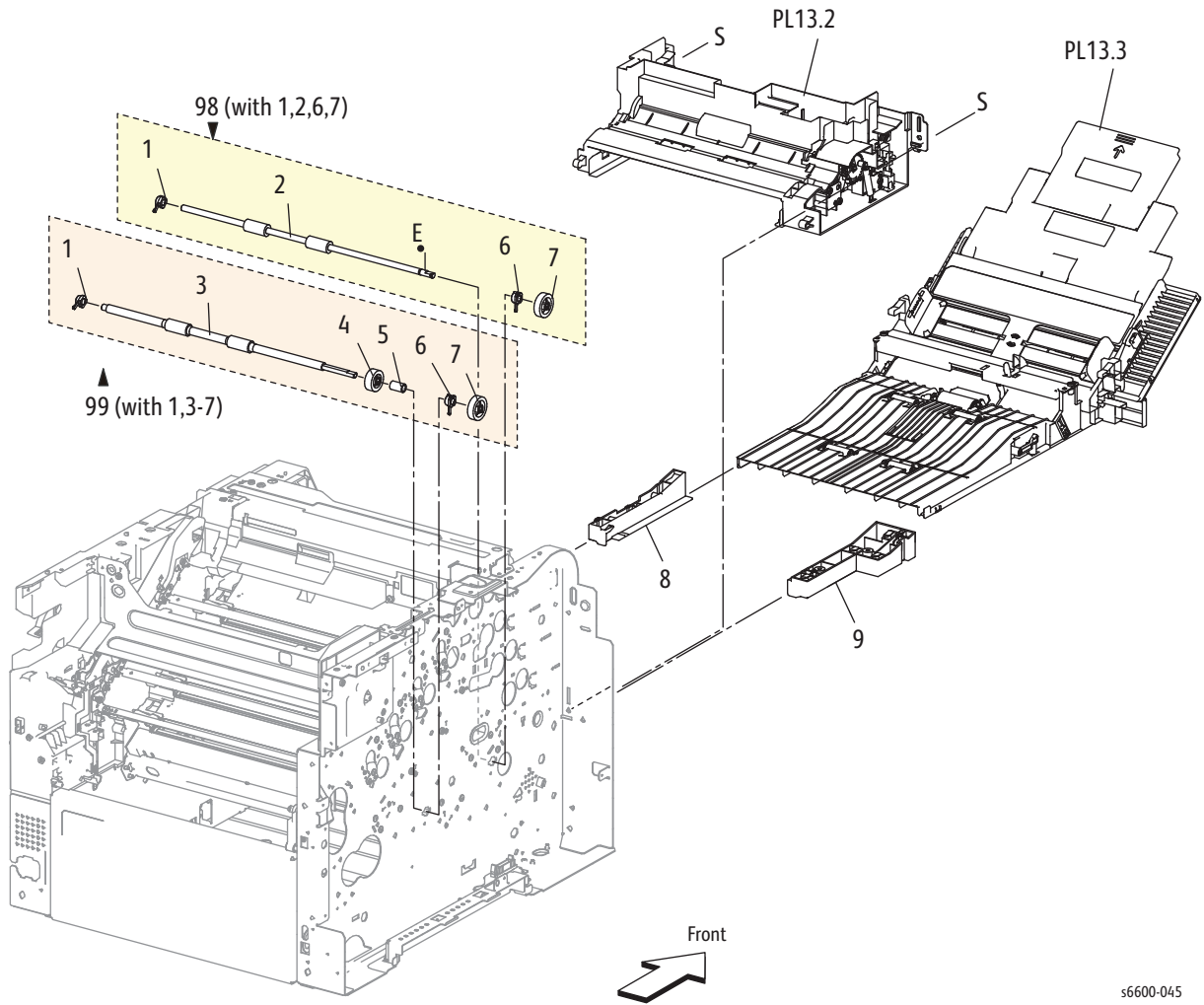
Parts List 10.3 Option Tray



Parts List 10.3 Option Tray

Item	Name	Part Number
1	Cassette Assy 550 Opt (with2-30) (550 Option Cassette Tray)	050K66516
2	Plate Assy Bottom	—
3	Holder Assy Retard Cst (with4-7)	—
4	Roll Assy Feed (Feed Roller Kit, with 2 Feed Rolls)	675K47673
5	Clutch Friction Rtd Z	—
6	Shaft Retard Cst	—
7	Holder Retard Cst	—
8	Guide Assy Side L 550 (Left Side Guide Assembly)	—
9	Guide Assy Side R 550 (Right Side Guide Assembly)	—
10	Gear Pinion	—
11	Cover Btm Lock 550	—
12	Rack Btm Lock 550	—
13	Gear Btm Lock Pinion	—
14	Gear Lever Btm Lock	—
15	Lever Btm Lock	—
16	Gear 40 Btm Lock	—
17	Spring Btm Lock	—
18	Spring Lock PB	—
19	Actuator Lock PB L	—
20	Actuator Size	—
21	Spring Btm Up 550 A4	—
22	Holder Spring Retard MSI (Bypass Tray Retard Spring Holder)	—
23	Spring Retard Cst	—
24	Rack Lift Up PB 550	—
25	Housing Base 550	—
26	Lever Ext End 550	—
27	Guide Assy End 550 Opt (550 Option End Guide Assembly)	—
28	Housing End 550	—
29	Plate Slot Size	—
30	Handle Cst 550 Opt (550 Option Cassette Handle)	—

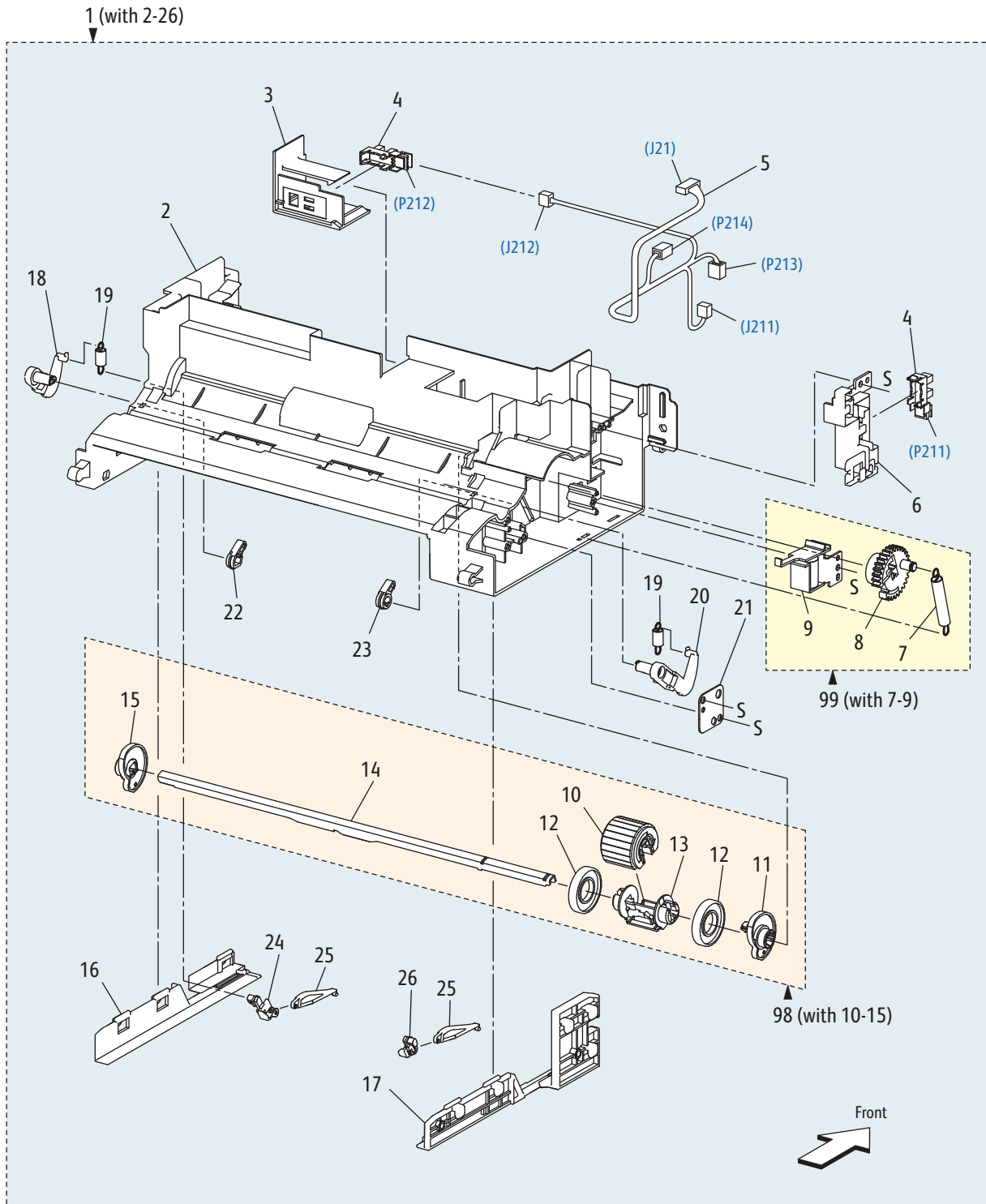
Parts List 13.1 Bypass Tray (MSI)



Parts List 13.1 Bypass Tray

Item	Name	Part Number
1	Bearing Dup (Duplex Bearing)	—
2	Roll Assy TA1 (TA1 Roller Assembly)	—
3	Roll Assy TA2 (TA2 Roller Assembly)	—
4	Gear TA 1	—
5	Spacer TA2	—
6	Bearing TA	—
7	Gear Turn	—
8	Guide MSI R (Right Bypass Tray Guide)	—
9	Guide MSI L (Left Bypass Tray Guide)	—
98	Kit Roll Assy 1 (with1,2,6,7) (Roller Assembly Kit 1)	604K73890
99	Kit Roll Assy 2 (with1,3-7) (Roller Assembly Kit 2)	604K73900

Parts List 13.2 Bypass Tray (MSI)

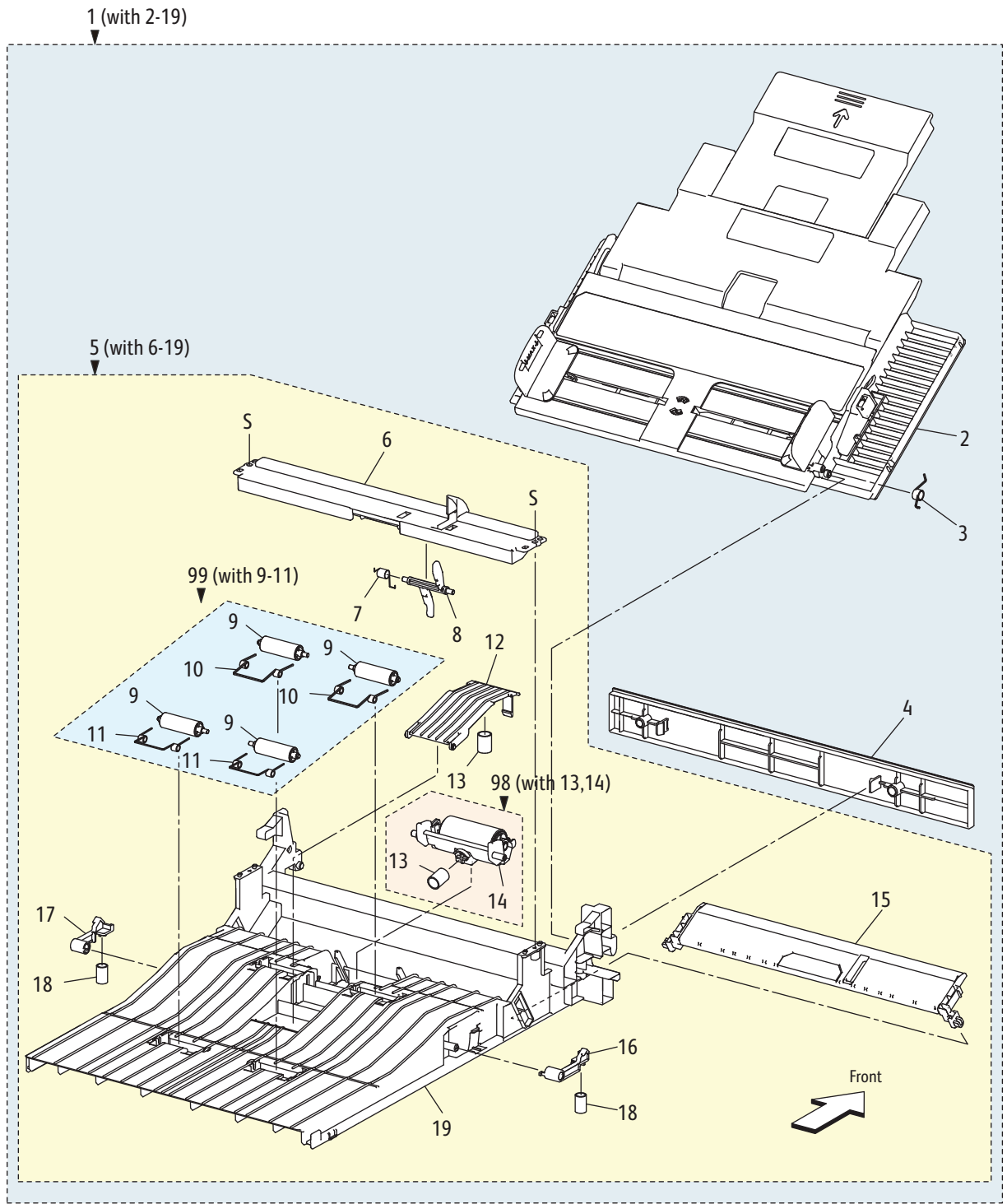


56600-046

Parts List 13.2 Bypass Tray

Item	Name	Part Number
1	Frame Assy MSI (with2-26) (Bypass Tray Frame Assembly)	801K47622
2	Frame MSI (Bypass Tray Frame)	—
3	Bracket No Paper MSI (Bypass Tray No Paper Bracket)	—
4	MSI Detect Sensor (Bypass Tray No Paper Sensor)	930W00123
5	Harness Assy MSI (Bypass Tray Harness Assembly)	—
6	Guide Harness MSI (Bypass Tray Harness Guide)	—
7	Spring Feed	—
8	Gear Feed MSI (Bypass Tray Feed Gear)	—
9	Solenoid Feed MSI (Bypass Tray Feed Solenoid)	—
10	Roll Assy Feed (Feed Roller Assembly)	059K78701
11	Cam MSI L (Left Bypass Tray Cam)	—
12	Roll Core	—
13	Holder Feed	—
14	Shaft Feed MSI (Bypass Tray Feed Shaft)	—
15	Cam MSI R (Right Bypass Tray Cam)	—
16	Guide Support R (Right Support Guide)	—
17	Guide Support L (Left Support Guide)	—
18	Arm R (Right Arm)	—
19	Spring NF (NF Spring)	—
20	Arm L (Left Arm)	—
21	Bracket Gear (Gear Bracket)	—
22	Follower R (Right Follower)	—
23	Follower L (Left Follower)	—
24	Guide Bottom R (Right Bottom Guide)	—
25	Slide Bottom (Bottom Slide)	—
26	Guide Bottom L (Left Bottom Guide)	—
98	Kit Roll Assy (with10-15) (Roller Kit Assembly)	604K73910
99	Kit Solenoid Assy (with7-9) (Solenoid Kit Assembly)	604K73921

Parts List 13.3 Bypass Tray (MSI)

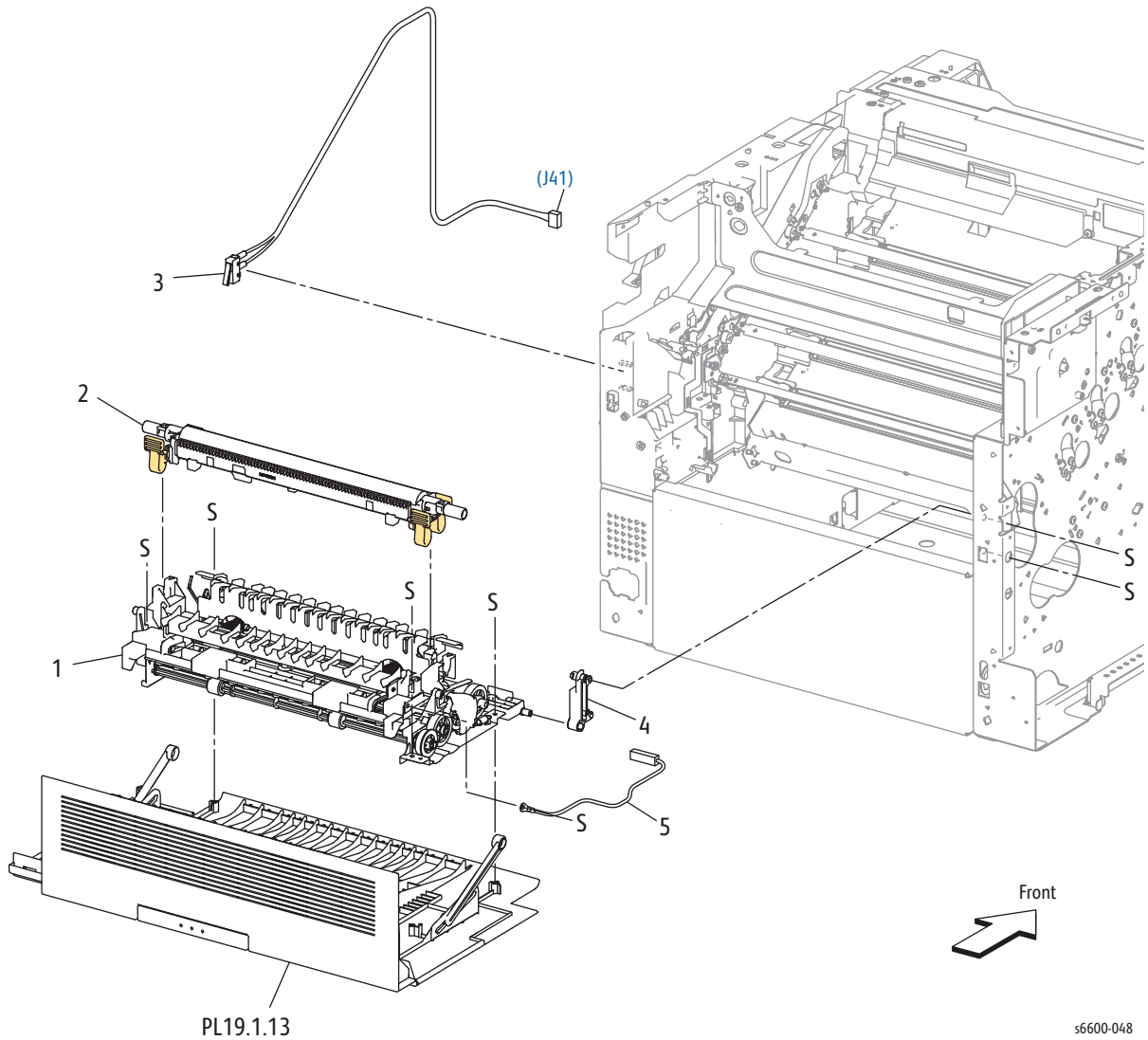


s6600-047

Parts List 13.3 MSI

Item	Name	Part Number
1	Tray Assy MSI Main (with2-19) (Bypass Tray Assembly)	050K66572
2	Cover Assy MSI (Bypass Tray Cover Assembly)	848K51102
3	Spring Damper (Damper Spring)	—
4	Cover MSI Under (Bypass Tray Lower Cover)	—
5	Chute Assy MSI (with6-19) (Bypass Tray Chute Assembly)	054K46612
6	Bar MSI Front (Bypass Tray Front Bar)	—
7	Spring No Paper (No Paper Spring)	—
8	Actuator No Paper (No Paper Actuator)	—
9	Roll Pinch MSI (Bypass Tray Pinch Roller)	—
10	Spring Pinch TA1 (TA1 Pinch Spring)	—
11	Spring Pinch TA2 (TA2 Pinch Spring)	—
12	Chute Retard (Retard Chute)	—
13	Spring Retard MSI (Bypass Tray Retard Spring)	—
14	Holder Assy Retard (Retard Holder Assembly)	—
15	Plate Assy Bottom (Bottom Plate Assembly)	—
16	Latch MSI L (Left Bypass Tray Latch)	—
17	Latch MSI R (Right Bypass Tray Latch)	—
18	Spring Latch MSI (Bypass Tray Latch Spring)	—
19	Chute MSI (Bypass Tray Chute)	—
98	Kit Roll Assy Separater (with13,14) (Separator Roller Assembly Kit)	604K74440
99	Kit Roll Pinch (with9-11) (Pinch Roller Kit)	604K73940

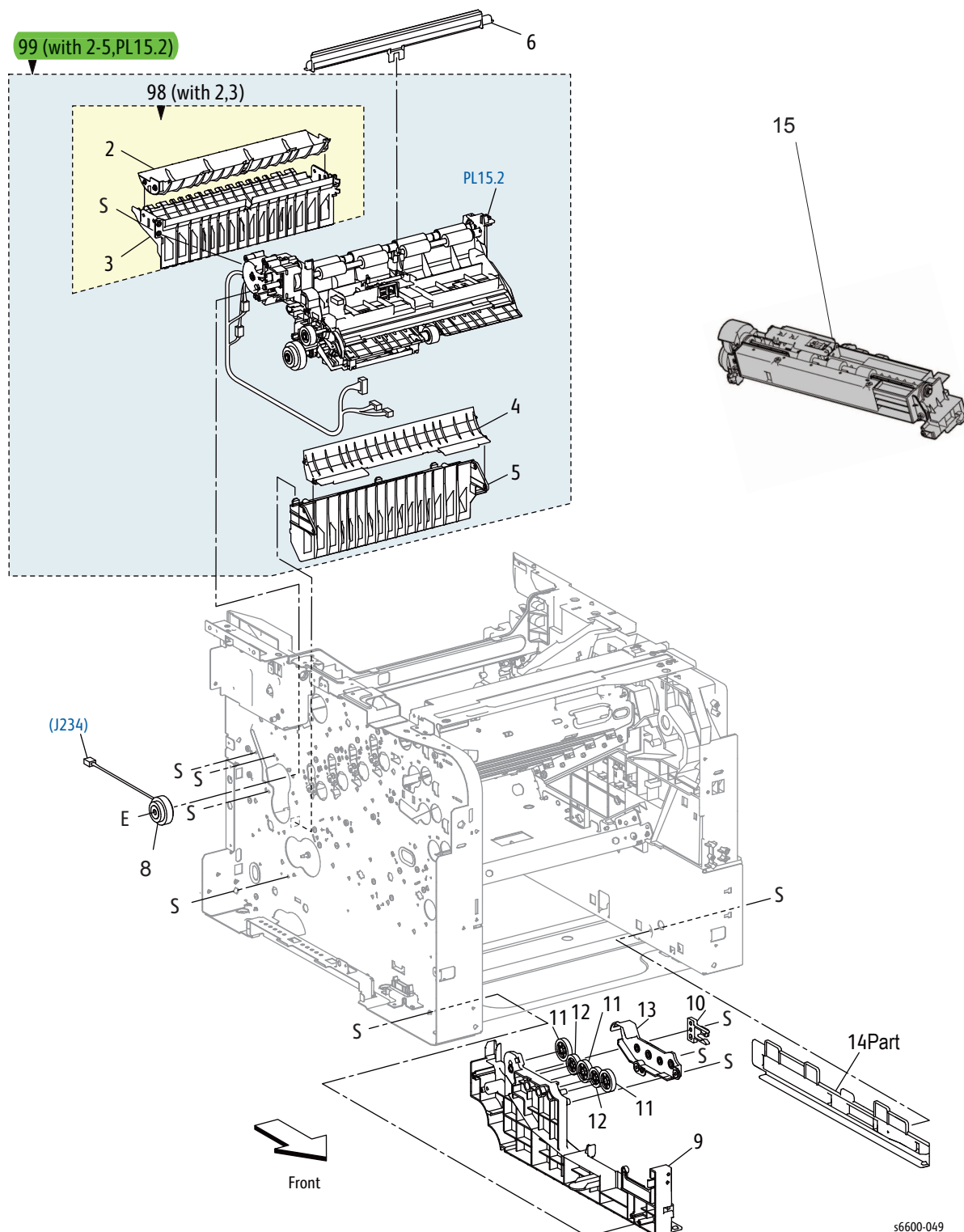
Parts List 14.1 Duplex



Parts List 14.1 Duplex

Item	Name	Part Number
1	Kit Duplex Assembly	054K46661
2	Roll Assy-2ND CRU (Transfer Roller)	—
3	Harness Assy Rear SW(Rear Interlock Switch)	—
4	Bracket Hinge Rear	868E68951
5	Harness Assembly	110K16891
99	Kit Roll Assy-2ND CRU (with2) (Transfer Roller)	604K77540

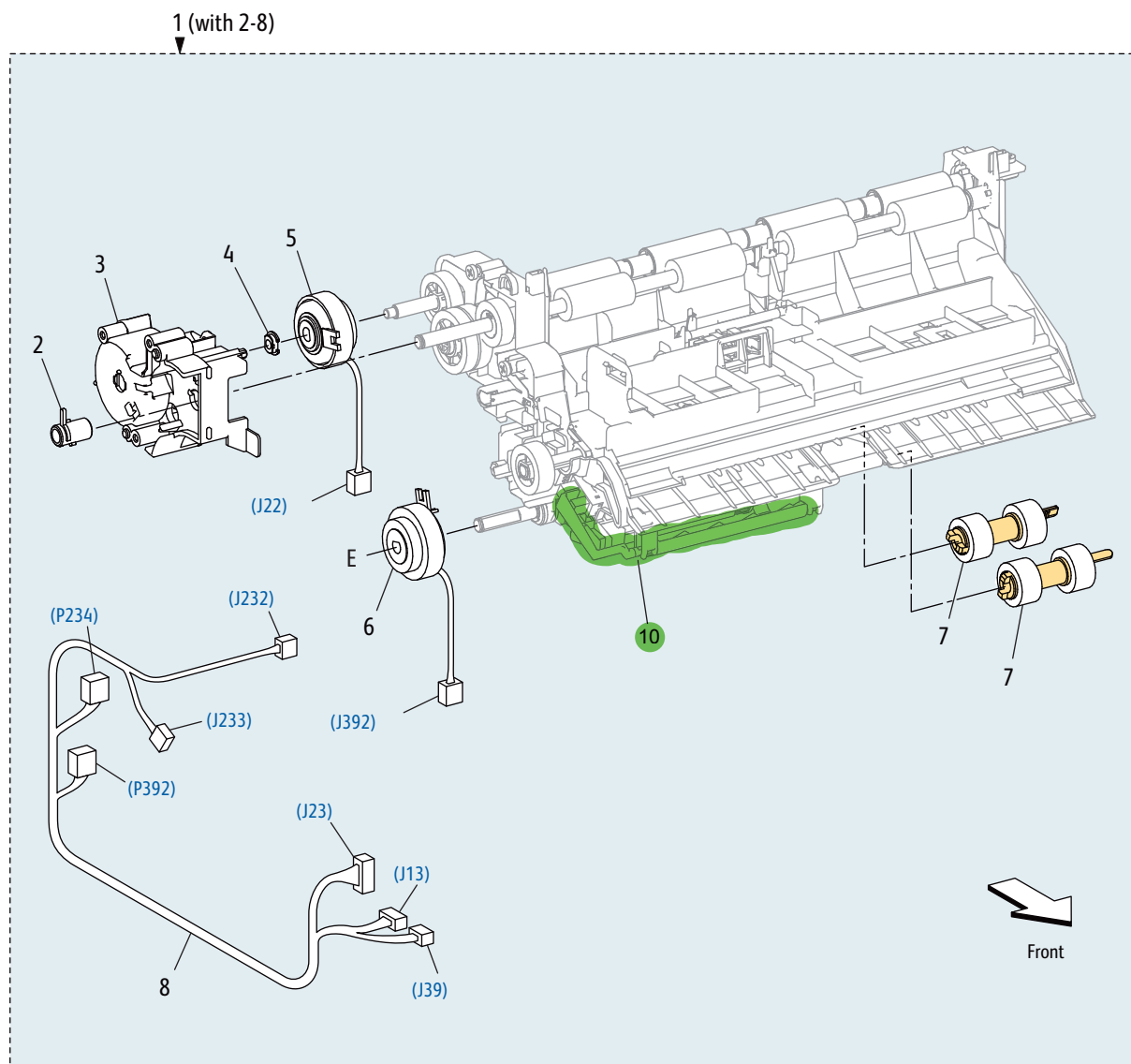
Parts List 15.1 Registration / Feeder



Parts List 15.1 Registration / Feeder

Item	Name	Part Number
1	—	—
2	Chute Dup Upper (Upper Duplex Chute)	—
3	Chute Assy Dup Regi (Regi Duplex Chute Assembly)	—
4	Chute Regi Lower	—
5	Chute Regi Opt 550	—
6	Chute Assy Upper IBT (Upper Transfer Belt Chute Assembly)	054K46650
7	—	—
8	Registration Clutch (part of Item #15)	—
9	Guide Tray L (Left Tray Guide)	—
10	Stopper CST (Cassette Stopper)	—
11	Gear Idle 28	—
12	Gear Idle 25	—
13	Cover Gear MSI	—
14	Guide Tray R (Right Tray Guide)	—
15	Feed Assy with Registration Clutch	059K71760
98	Kit Chute Dup Assy (with 2,3) (Duplex Chute Assembly Kit)	054K46640
99A	Kit Chute Regi High Assy DN (with 2-5, PL15.2) (Upper Regi Chute Assembly Kit) DN = Duplex/Network	604K77750
99B	Kit Chute Regi High Assy N (with 2-5, PL15.2) (Upper Regi Chute Assembly Kit) N = Network	604K77760

Parts List 15.2 Registration / Feeder

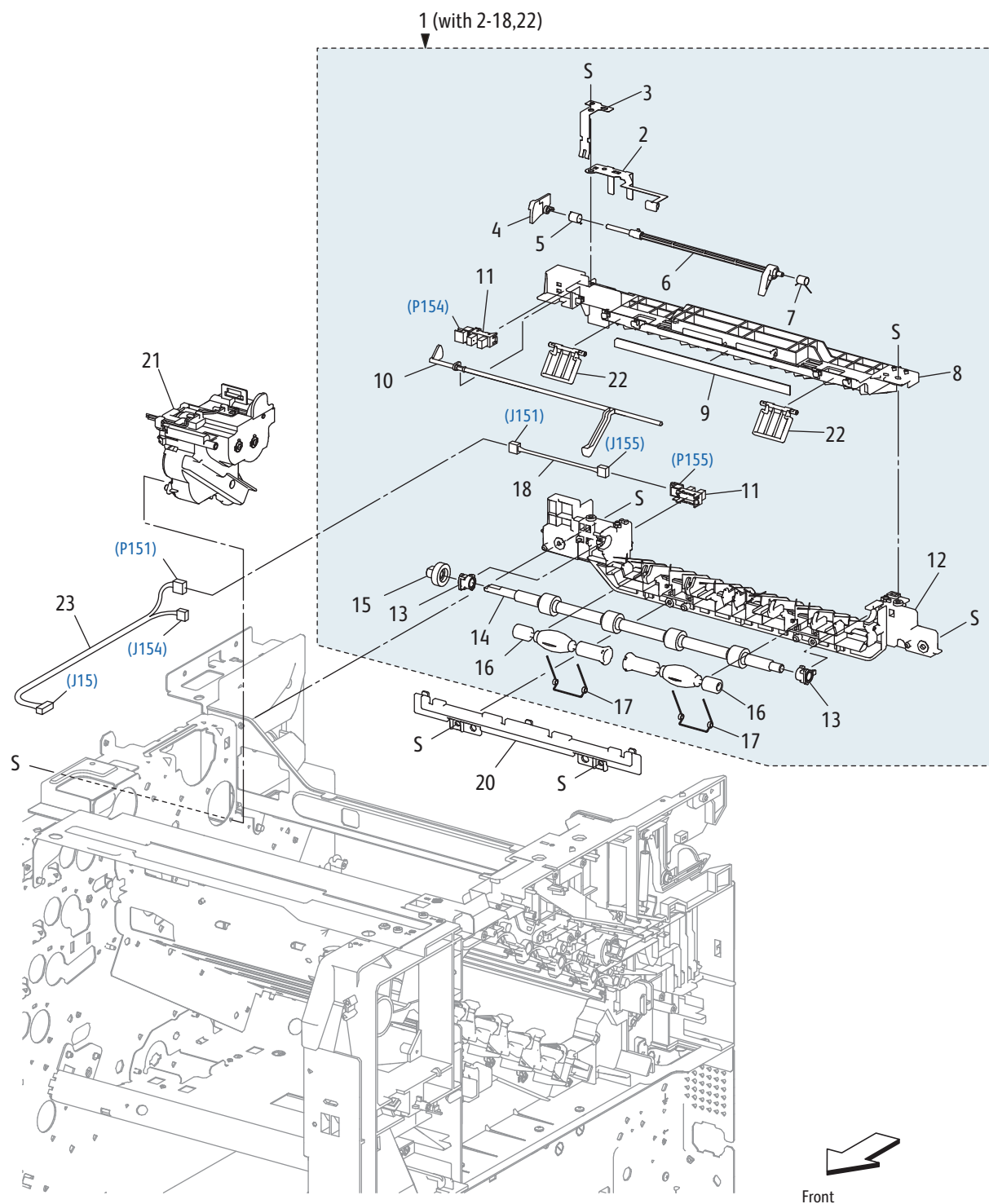


s6600-050

Parts List 15.2 Registration / Feeder

Item	Name	Part Number
1	Simplex-only Registration Chute Assembly	054K47990
2	Bearing Regi R (Right Regi Bearing)	—
3	Cover Dup Gear (Duplex Gear Cover)	—
4	Bearing CLH AD	—
5	Clutch Assy Dup (Duplex Clutch Assembly)	121K48680
6	Clutch Assy Opt Feed (Feed Clutch Assembly)	—
7	Roll Assy Feed (Feed Roller Kit, with 2 Rolls)	675K47673
8	Harness Assy Regi (Regi Harness Assembly)	—
9	Chute Sub Assy Regi (Regi Chute Sub-Assembly)	—
10	No Paper Actuator	120E33761

Parts List 17.1 Exit

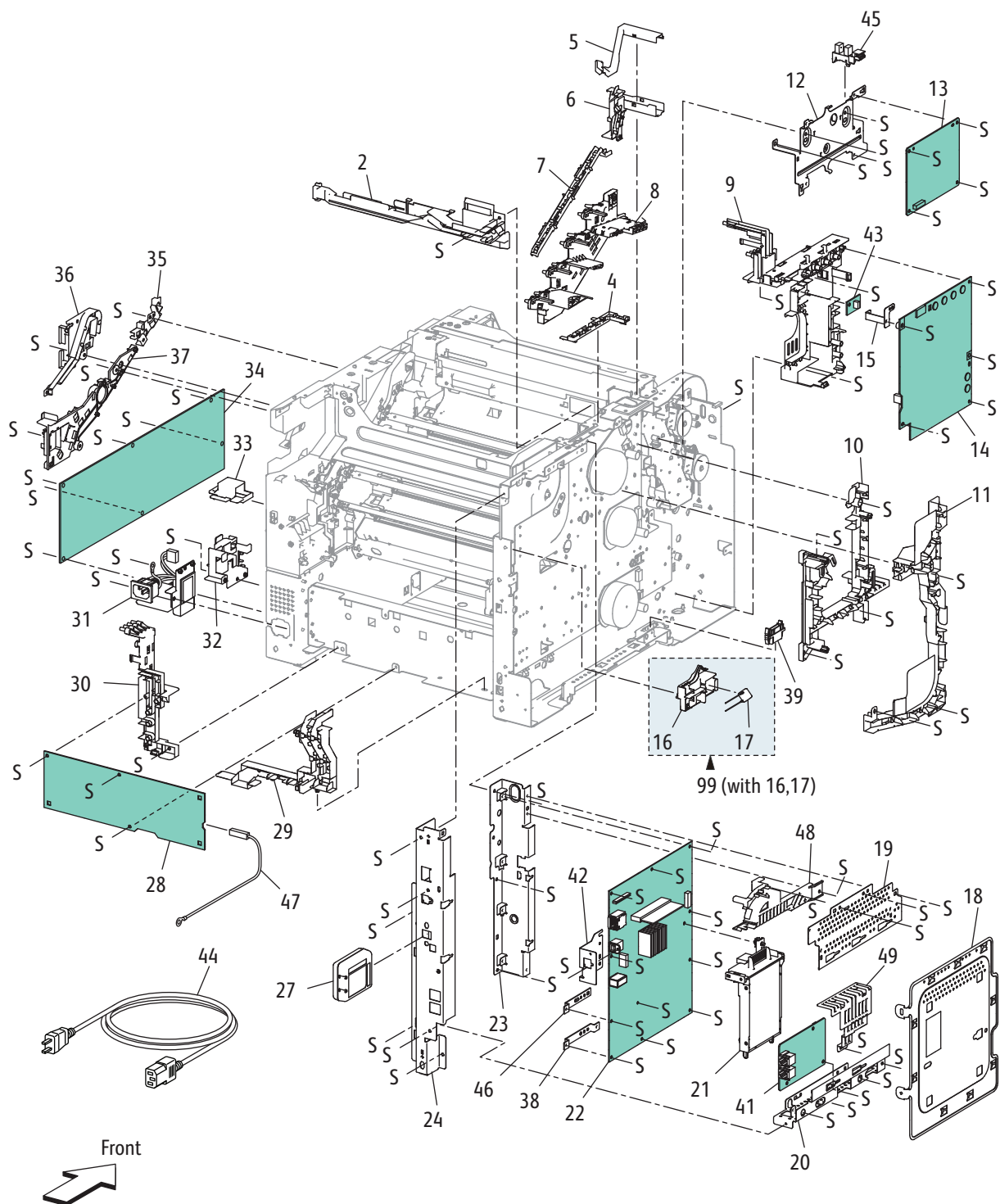


s6600-051

Parts List 17.1 Exit

Item	Name	Part Number
1	Kit Assy Exit (with 2-18,22) (Exit Kit Assembly)	054K49180 (alt 054K49231)
2	Plate Earth Exit B	—
3	Plate Earth Exit A	—
4	Actuator Exit B	—
5	Spring Actuator B	—
6	Actuator Exit A	—
7	Spring Actuator A	—
8	Chute Exit Upper S3	—
9	Eliminator Exit	—
10	Actuator Full Stack	—
11	Sensor-Photo Int (Interlock Photo Sensor)	930W00123
12	Chute Exit Lower S3	—
13	Bearing-Exit	—
14	Roll Assy Exit (Exit Roller Assembly)	—
15	Gear Exit	—
16	Roll-Pinch	—
17	Spring-Pinch	—
18	Harness Assy Exit Snr (Exit Sensor Harness Assembly)	—
19	—	—
20	Cover Exit Tray (Exit Tray Cover)	—
21A	Drive Assy Exit DN (Exit Drive Assy with Duplex)	007K18762
21B	Drive Assy Exit N (Exit Drive Assy w/o Duplex)	007K18772
22	Flapper Exit	—
23	Harness Assy Snr (Sensor Harness Assembly)	—

Parts List 18.1 Phaser 6600 Electrical (1/3)



S6600-052

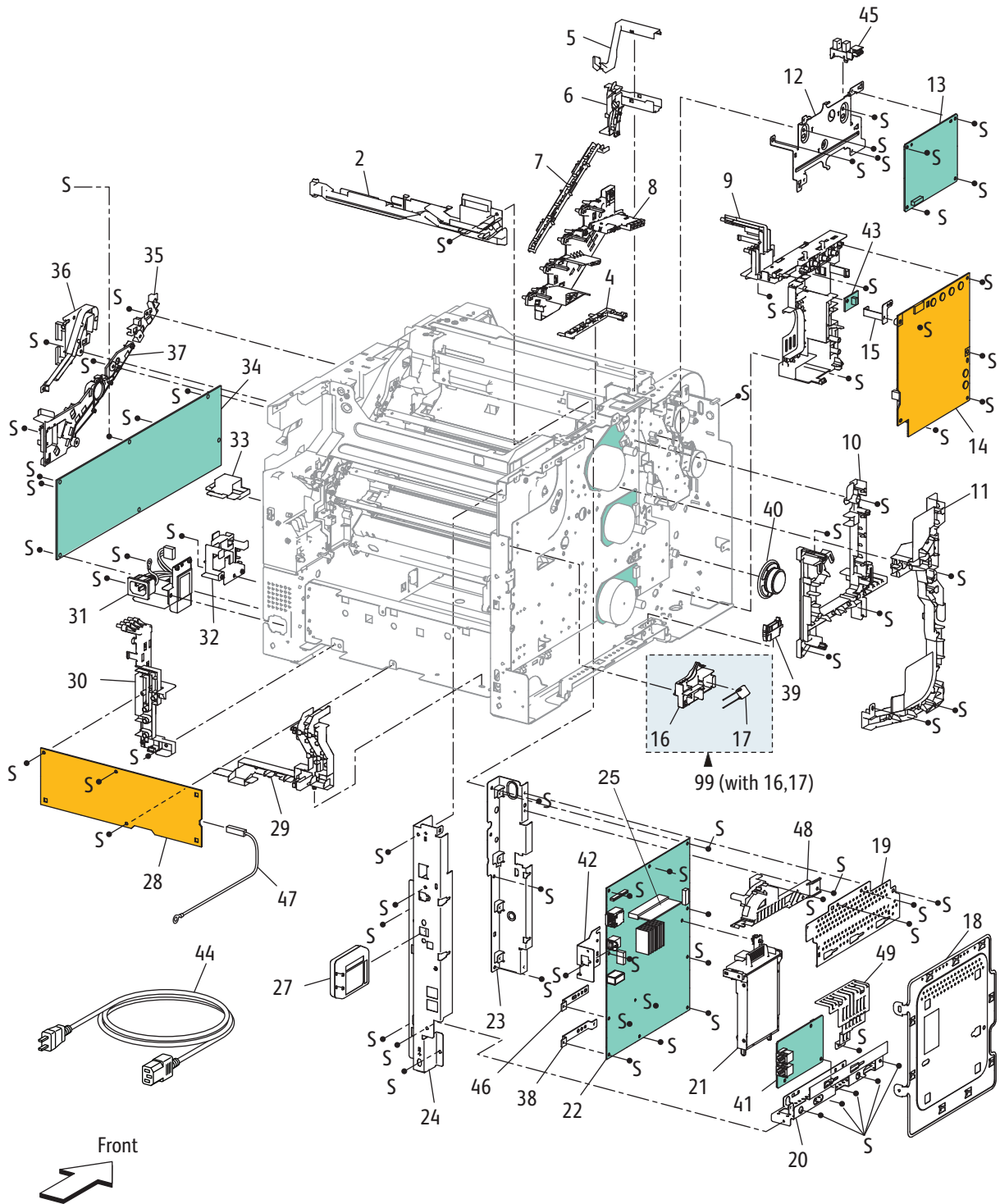
Parts List 18.1 Phaser 6600 Electrical (1/3)

Item	Name	Part Number
1	—	—
2	Guide_ Harness_ Top	—
3	—	—
4	Guide_ Harness_ Exit	—
5	Cover Harness Top	—
6	Guide Harness Top L (Left Top Harness Guide)	—
7	Guide_ Harness_ Erase_ CRM	—
8	Housing _ Assy_ Charge_ Deve (Developer Charge Housing Assembly)	—
9	Housing_ Assy_ Charge_ Deve_ Out (Outer Developer Charge Housing Assembly)	—
10	Guide Harness Video (Video Harness Guide)	—
11	Guide Harness L (Left Harness Guide)	—
12	Plate MCU (MCU Plate)	—
13	PWBA MCU (MCU Board)	960K67961
14	PWBA HVPS XD (Development HVPS Board)	105K26092
15	Plate Earth HV (HV Ground Plate)	—
16	Housing Assy Gnd Fusing (Fuser Ground Housing Assembly)	—
17	Varistor, NVD10UCD1100	—
18	Plate Window	—
19	Plate ESS Top	—
20	Plate_ ESS_ Bottom	—
21	160 GB HDD Productivity Kit	604K84810
22	PWBA ESS (IP Board)	960K60494
23	Plate ESS Front (Front IP Board Plate)	—
24	Plate ESS Rear (Rear IP Board Plate)	—
25	—	—
26	—	—
27	Wireless Kit (Drop-Ship only; not a service part)	016E21300
28	PWBA HVPS TR (Transfer HVPS Board)	105K26102
29	Guide_ Harness_ PH	—
30	Housing_ Assy_ Wire_ TR_IN (Inner Transfer Wire Housing Assembly)	—

Parts List 18.1 Phaser 6600 Electrical (1/3)

Item	Name	Part Number
31	AC In (AC Inlet)	604K76361
32	Guide Harness LV AC	—
33	Cap LV Bottom	—
34A	LVPS 110V	105K30560
34B	LVPS 220V	105K30570
35	Guide Harness R (Right Harness Guide)	—
36	Holder Drower	—
37	Housing Assy Wire TR Out	—
38	Bracket ESS SFP (IP Board Bracket)	—
39	Fdr Drawer1	913W12104
40	—	—
41	—	—
42	—	—
43	PWBA EEPROM XPRO (EEPROM Board)	—
44A	Power Cord US 110V	675K43778
44B	Power Cord TAA 220V Euro	—
44C	Power Cord TAA 220V UK	—
45	Sensor-Photo INT (Interlock Photo Sensor)	930W00123
46	—	—
47	Harness Assy BTR	—
99	Varistor Assy (with16,17)	848K69221

Parts List 18.1 WorkCentre 6605 Electrical (2/3)



s6600-001

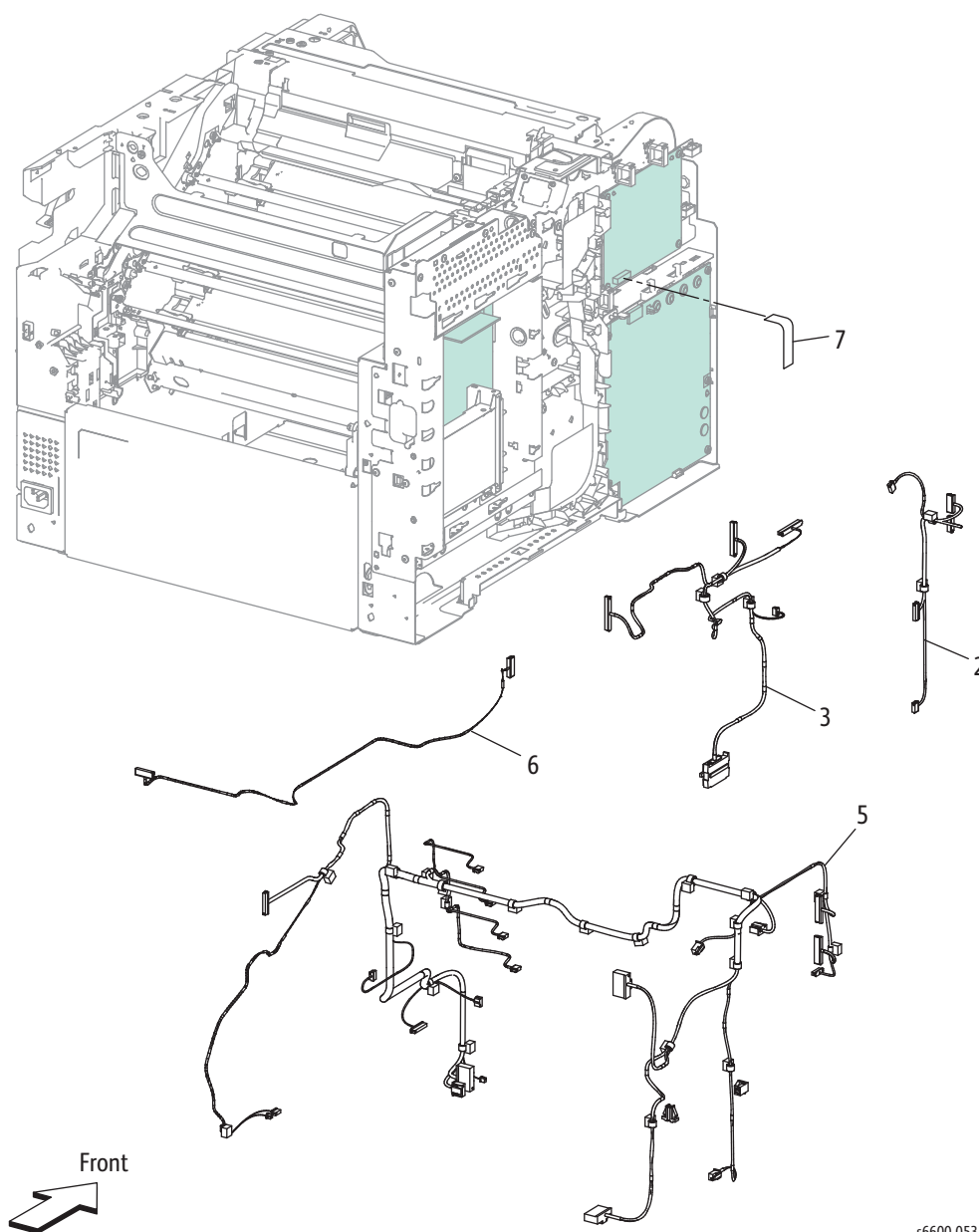
Parts List 18.1 WorkCentre 6605 Electrical (2/3)

Item	Name	Part Number
1	—	—
2	Guide Harness Top (Top Harness Guide)	—
3	—	—
4	Guide Harness Exit (Exit Harness Guide)	—
5	Cover Harness Top (Top Harness Cover)	—
6	Guide Harness Top L (Top Left Harness Guide)	—
7	Guide Harness Erase CRM (CRM Erase Harness Guide)	—
8	Housing Assy Charge Deve (Developer Charge Housing Assembly)	—
9	Housing Assy Charge Deve Out (Outer Developer Charge Housing Assembly)	—
10	Guide Harness Video (Video Harness Guide)	—
11	Guide Harness L (Left Harness Guide)	—
12	Plate MCU (MCU Plate)	—
13	PWBA MCU (MCU Board)	960K67961
14	PWBA HVPS XD (Development HVPS Board)	105K26092
15	Plate Earth HV (HV Ground Plate)	—
16	Housing Assy Gnd Fusing (Fuser Ground Housing Assembly)	—
17	Varistor, NVD10UCD1100	—
18	Plate Window AIO	—
19	Plate ESS Top AIO (MFP Top IP Board Plate)	—
20	Plate ESS Bottom AIO (MFP Bottom IP Board Plate)	—
21	160 GB HDD Productivity Kit	604K84810
22	PWBA ESS AIO (IP Board)	960K69200
23	Plate ESS Front AIO (MFP Front IP Board Plate)	—
24	Plate ESS Rear AIO (MFP Rear IP Board Plate)	—
25	Optional 512MB RAM (Productivity Kit)	237E25990
26	—	—
27	Wireless Kit (Drop-Ship only; not a service part)	016E21300
28	TR HVPS Board	105K26102
29	Guide_ Harness_ PH	—
30	Housing_ Assy_ Wire_ TR_IN	—

Parts List 18.1 WorkCentre 6605 Electrical (2/3)

Item	Name	Part Number
31	AC In (AC Inlet)	604K76361
32	Guide_ Harness_ LV_AC	—
33	Cap LV Bottom	—
34A	LVPS 110V	105K30560
34B	LVPS 220V	105K30570
35	Guide Harness R (Right Harness Guide)	—
36	Holder_ Drawer	—
37	Housing_ Assy_ Wire_ TR_ Out	—
38	Bracket ESS SFP (IP Board Bracket)	—
39	Fdr Drawer1	913W12104
40	Speaker Assembly AIO	—
41	PWBA FAX	960K53602
42	Bracket USB (USB BrackeMCUt)	—
43	PWBA EEPROM XPRO (EEPROM Board)	—
44	Power Cord US 110V	675K43778
44B	Power Cord TAA 220V Euro	—
44C	Power Cord TAA 220V UK	—
45	Sensor-Photo INT (Interlock Photo Sensor)	930W00123
46	Bracket ESS AIO (MFP IP Board Bracket)	674E04131
47	Harness Assy BTR	—
48	Guard ESS Top AIO (Guide Harness Bypass Tray) (Top IP Board Guard (Bypass Tray Harness Guide))	—
49	Guard ESS Bottom AIO (Bottom IP Board Guard)	—
		—
99	Varistor Assy (with16,17)	848K69221

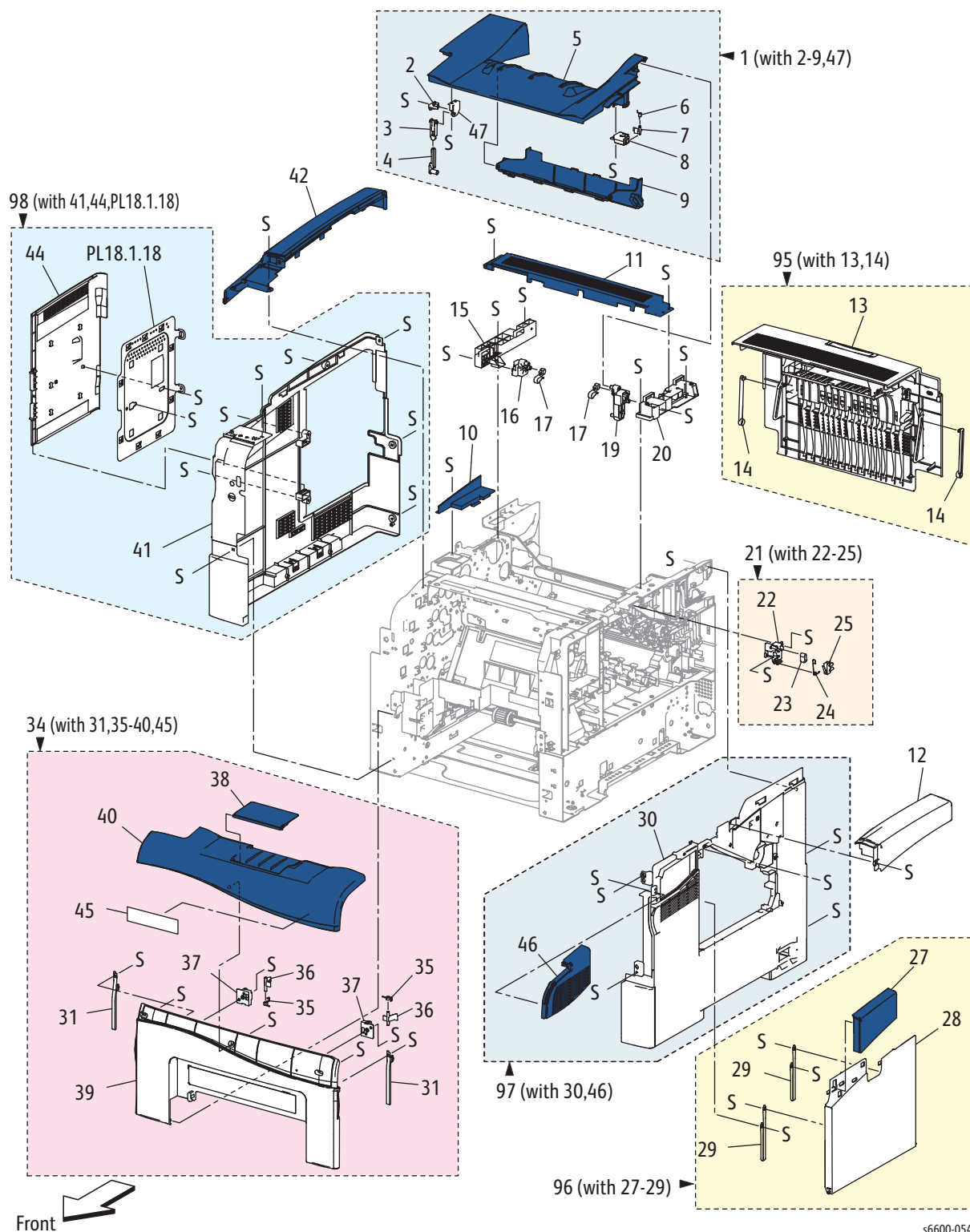
Parts List 18.2 Electrical (3/3)



Parts List 18.2 Electrical (3/3)

Item		Part Number
1	—	—
2	Harness Assy Drive (Drive Harness Assembly)	—
3	Harness Assy Main (Main Harness Assembly)	—
4	—	—
5	Harness Assy Top SFP (Top Harness Assembly)	—
6	Harness Assy HVPS (HVPS Harness Assembly)	—
7	FFC MCU-HVPS (MCU-HVPS Flat Flex Cable)	—

Parts List 19.1 Phaser 6600 Covers



s6600-054

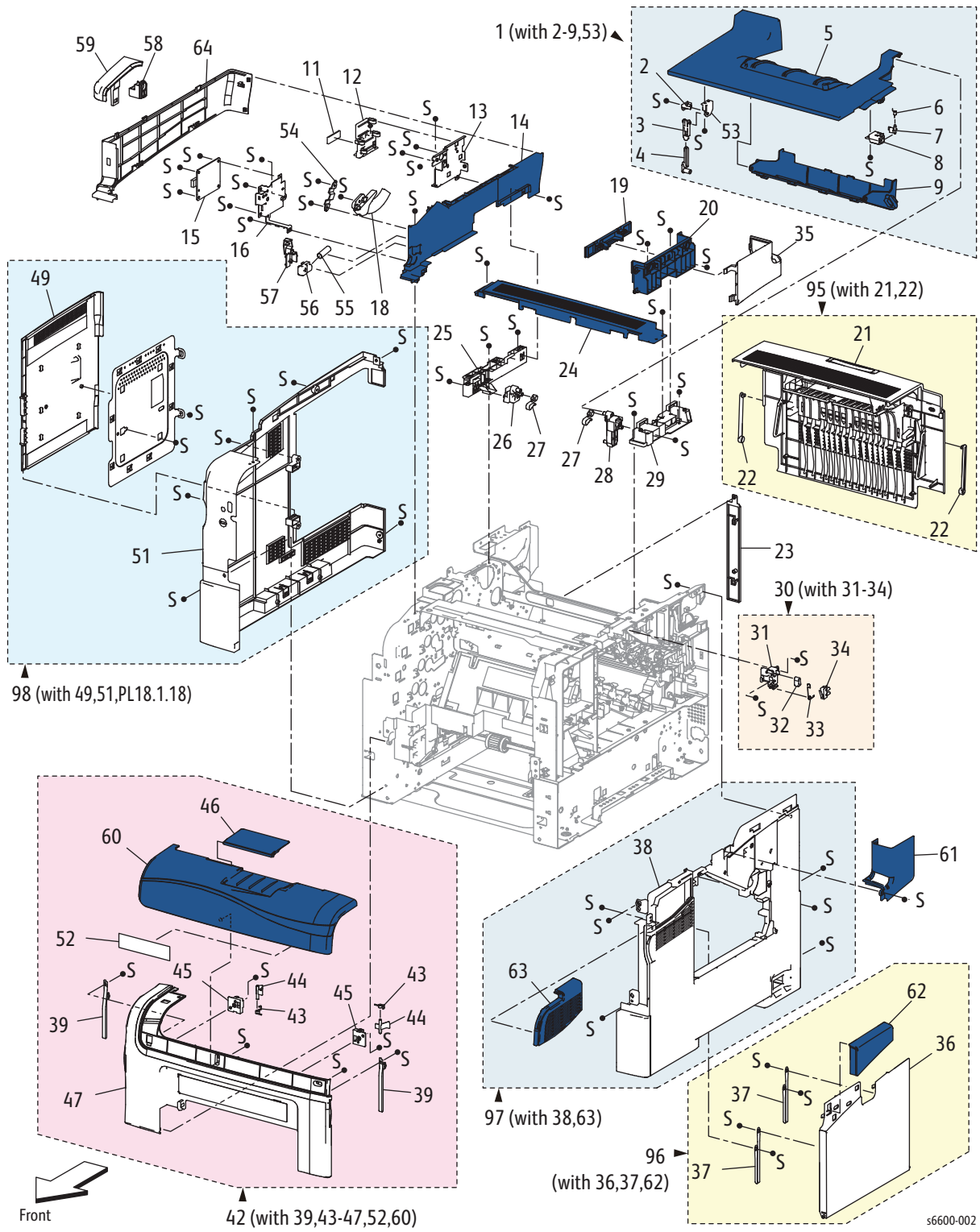
Parts List 19.1 Phaser 6600 Covers

Item		Part Number
1	Cover Assy Top SFP (with2-9,47) (Top Cover Assembly)	848K59082
2	Holder Link Trans	—
3	Link Trans 1	—
4	Link Trans 2	—
5	Cover Top SFP	—
6	Spring Actuator Intlk	—
7	Actuator Turn Intlk	—
8	Holder Actuator Intlk	—
9	Cover Tray Bottom (Bottom Tray Cover)	—
10	Cover Top Under L (Left Sub-top Cover)	—
11	Cover Exit (Exit Cover)	848E69601
12	Cover Top R (Right Top Cover)	—
13	Cover Assy Rear (Rear Cover Assembly)	—
14	Link Rear Cover	—
15	Bracket Hinge L (Left Hinge Bracket)	—
16	Hinge Top L (Left Top Hinge)	—
17	Stopper Cover Top (Top Cover Stopper)	—
18	—	—
19	Hinge Top R (Right Top Hinge)	—
20	Bracket Hinge R (Right Hinge Bracket)	—
21	Switch Assy Interlock R (with22-25) (Right Interlock Switch Assembly)	110K16891
22	Bracket Intlk Side R (Right Side Interlock Bracket)	—
23	Actuator Swing Intlk	—
24	Spring WC IL	—
25	Harness Assy Door I/L	—
26	—	—
27	Cover Side R Door Upper SFP (Right-Side Door Upper Cover)	—
28	Cover Side R Door SFP (Right Side Door Cover)	—
29	Strap Cover Side R (Right Side Cover Strap)	—
30	Cover Side R (Right Side Cover)	—

Parts List 19.1 Phaser 6600 Covers

Item		Part Number
31	Strap Front (Front Strap)	—
32	—	—
33	—	—
34	Cover Assy Front SFP (with31,35-40,45) (SFP Front Cover Assembly)	848K73070
35	Spring Latch Front (Front Latch Spring)	—
36	Latch Front	—
37	Bracket Latch	—
38	Cover Front Ext	—
39	Cover Front SFP	—
40	Cover Front Band SFP	—
41	Cover Side L SFP (SFP Left Side Cover)	—
42	Cover Top L (Top Left Cover)	—
43	—	—
44	Cover ESS SFP	—
45	Plate Logo	—
46	Cover Side R Front SFP (Front Right Side Cover)	—
47	Holder Link Trans Support	—
		—
95	Kit Cover Assy Rear(with13,14) (Rear Door Assembly)	604K77700
96	Cover Assy Waste Door(with27-29) (Right Side Door)	848K73742
97A	Kit Cover Assy Right DN (with30,46) (Right Cover Assembly - DN)	604K80431
97B	Kit Cover Assy Right N (with30,46) (Right Cover Assembly - N)	848K73722
98	Left Cover Assy(with41,44,PL18.1.18) (Left Cover Assembly)	848K73050
99	Kit Plate Logo x100P (with 45 x 100)	604K77710

Parts List 19.1 WorkCentre 6605 Covers



s6600-002

Parts List 19.1 WorkCentre 6605 Covers

Item		Part Number
1	Cover Assy Top AIO (with2-9,53) (Top Cover Assembly)	848K59102
2	Holder Link Trans	—
3	Link Trans 1	—
4	Link Trans 2	—
5	Cover Top AIO	—
6	Spring Actuator Intlk	—
7	Actuator Turn Intlk	—
8	Holder Actuator Intlk	—
9	Cover Tray Bottom	—
10	—	—
11	Core FFC	—
12	Holder FFC Core	—
13	Bracket Guide FFC (FFC Guide Bracket)	—
14	Cover-Pole in LH AIO (MFP Left Hand Inner Pole Cover)	—
15	PWBA USB Hub (USB Hub Board)	960K57396
16	Bracket USB (USB Bracket)	—
17	—	—
18	—	—
19	Cover Pole in RH Upper AIO (Upper Right Hand Inner Pole Cover)	—
20	Cover Pole in RH AIO (Right Hand Inner Pole Cover)	—
21	Cover Assy Rear (Rear Cover Assembly)	848K51190
22	Link Rear Cover	—
23	Cover-Rear Lower LH (Lower Left Hand Rear Cover)	—
24	Cover Exit (Exit Cover)	—
25	Bracket Hinge L (Left Hinge Bracket)	—
26	Hinge Top L (Left Top Hinge)	—
27	Stopper Cover Top (Top Cover Stopper)	—
28	Hinge Top R (Right Top Hinge)	—
29	Bracket Hinge R (Right Hinge Bracket)	—
30	Switch Assy Interlock R (with31-34) (Right Interlock Switch Assembly)	110K16891

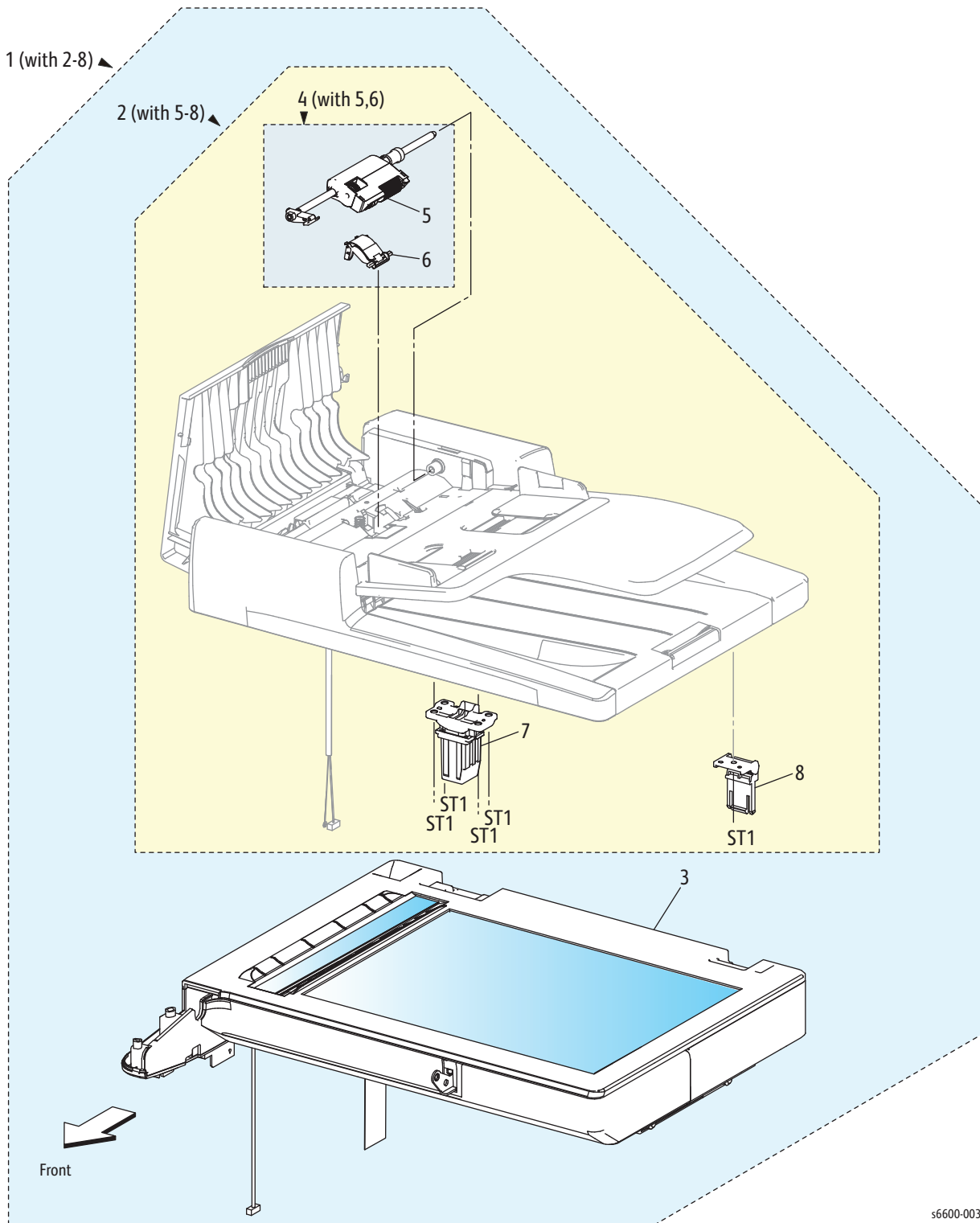
Parts List 19.1 WorkCentre 6605 Covers

Item		Part Number
31	Actuator Swing Intlk	—
32	Bracket Intlk Side R (Right Side Interlock Bracket)	—
33	Spring WC IL	—
34	Harness Assy Door I/L	—
35	Strap Cover Side R (Rear Right Pole Cover)	—
36	Cover Side R Door SFP (Right-Side Door Cover)	—
37	Strap Cover Side R (Right Side Door Strap)	—
38	Cover-Side R (Right Side Cover)	—
39	Strap Front (Front Strap)	—
40	—	—
41	—	—
42	Cover Assy Front AIO (with39,43-47,52,60) (MFP Front Door Assembly)	848K73110
43	Spring Latch Front (Front Latch Spring)	—
44	Latch Front	—
45	Bracket Latch	—
46	Cover Front Ext	—
47	Cover-Front AIO	—
48	—	—
49	Cover ESS AIO (IP Board Cover)	—
50	—	—
51	Cover-Side L AIO (Left Side Cover)	—
52	Plate Logo	—
53	Holder Link Trans Support	—
54	Holder Dumper UI (Control Panel Damper Holder)	—
55	Spring Tilt Button	—
56	Lever Lock UI	—
57	Link Stopper UI	—
58	Holder UI Pivot (Control Panel Pivot Holder)	—
59	Cover Hinge UI (Control Panel Hinge Cover)	—
60	Cover Front Top AIO	—

Parts List 19.1 WorkCentre 6605 Covers

Item		Part Number
61	Cover Base Front (Front Right Pole Cover)	—
62	Cover Side Door Upr AIO	—
63	Cover Side R Front Top AIO (Top Front Right Side Cover)	—
64	Cover Base L Out IIT (Outer Left Pole Cover)	—
		—
95	Kit Cover Assy Rear (with 21,22) (Rear Door Assembly)	604K77700
96	Cover Assy Waste Door (with 36,37,62) (Right Side Door)	848K73752
97A	Kit Cover Assy Right DN (with 38,63) (Right Cover Assembly - DN)	604K80441
97B	Kit Cover Assy Right N (with 38,63) (Right Cover Assembly - N)	848K73732
98	Left Cover Assembly(with 49,51,PL18.1.18)	848K73090

Parts List 51.1 WorkCentre 6605 Scanner



Parts List 51.1 WorkCentre 6605 Scanner

Item	Name	Part Number
1	Scanner Assembly (With2-8)	—
2	DADF Assembly (with5-8)	059K74113
3	IIT Assembly	062K24012
4	IIT Pick-up Module Kit (With5,6)	604K77980
5	IIT Pick-up	—
6	IIT Separation pad	—
7	Hinge L (Left Hinge)	003K89090
8	Hinge R (Right Hinge)	003K89100

Xerox Supplies and Accessories

Hardware Kit

Description	Part Number
Hardware Kit	604K60070
Screw For Plastic, Tapping - ST1	—
Screw For Plastic, Tapping - ST4	—
Screw For Plastic, Tapping W/flange ST-10	—
Screw For Metal Sheet SM2	—

Consumables

Description	Part Number
Toner Cartridge Yellow Magenta Cyan Black	Go to www.xerox.com/office/6600supplies
Waste Cartridge	108R01124
Imaging Unit Kit(Y, M, C, K, and Cleaner Assembly) Yellow Magenta Cyan Black	108R01121 604K77581 604K77571 604K77561 604K77551
Long Life Maintenance Kit (Transfer Unit)	108R01122

Routine Maintenance Items

Description	Part Number
Fuser	
110V	115R00076
220V	115R00077
Maintenance Kit (Transfer Belt, Transfer Roller, Cassette Retard Roller)	676K20770
IIT Pick-up Module Kit	604K77980
Feed Roller Assembly Kit (3 pcs.)	675K47673
Cassette Retard Roller Kit	604K77660

Parts Lists